

# ELECTROSURGICAL ACCESSORIES

*TECHNICAL INFORMATION*



# INDEX

---

Page 06: *Power Supply Cable*

Page 09: *Surgical pencil*

Page 12: *Foot Switch*

Page 16: *Neutral*

Page 23: *Connection*

Page 29: *Electrode*

Page 32: *Adapters*

Page 34: *Bipolar/Monopolar*

Page 41: *Evacuation Kit*

Page 45: *Units support*

# CAPTIONS

## Compatibility:

+ = optional

x = not compatible

# = to verify

N = Quantity Supplied



**Packaging:**  
quantity of articles contained



**Autoclavable at 134°**



**Not reusable**



**Sterilized with ethylene**

**IP67**

The item is completely dust-proof and can with stand a 30-minute immersion in standing water



**Anti explosion**



**100 Sterilization cycles**



**30 Sterilization cycles**





# ACCESORIES



# POWER SUPLY CABLE

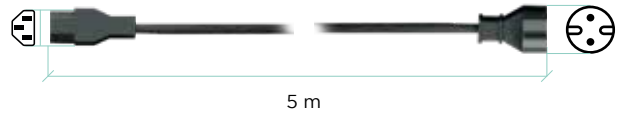
**Description** Power supply cable SIE-IEC  
**Cable Length** 5 m (196,85 in)

- + 50 D
- + 80 D
- + 80
- + 120
- + 160
- + 200
- TOUCH 200
- FLASH 120
- FLASH 160
- FLASH 200
- 300 HP
- 400 HP
- TOUCH HP
- TOUCH HP (Argon)
- SURTRON EVAC
- SURTRON ABC



pcs: 1

00100.01



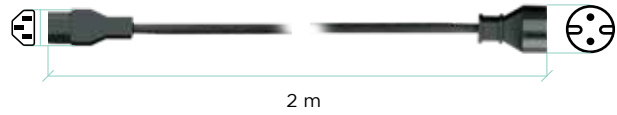
**Description** Power supply cable SIE-IEC  
**Cable Length** 2 m (78,74 in)

- 50 D
- 80 D
- 80
- 120
- 160
- + 200
- + TOUCH 200
- + FLASH 120
- + FLASH 160
- + FLASH 200
- + 300 HP
- + 400 HP
- + TOUCH HP
- + TOUCH HP (Argon)
- + SURTRON EVAC
- + SURTRON ABC



pcs: 1

00100.03



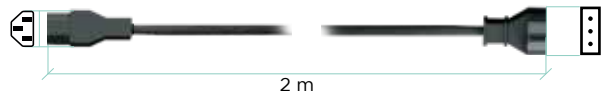
**Description** Power supply cable IT-IEC  
**Cable Length** 2 m (78,74 in)

- + 50 D
- + 80 D
- + 80
- + 120
- + 160
- + 200
- + TOUCH 200
- + FLASH 120
- + FLASH 160
- + FLASH 200
- + 300 HP
- + 400 HP
- + TOUCH HP
- + TOUCH HP (Argon)
- + SURTRON EVAC
- + SURTRON ABC



pcs: 1

00100.00



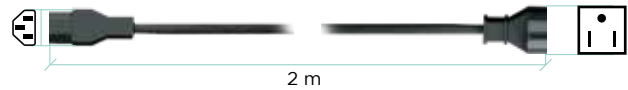
**Description** Power supply cable USA-IEC  
**Cable Length** 2 m (78,74 in)

- + 50 D
- + 80 D
- + 80
- + 120
- + 160
- + 200
- + TOUCH 200
- + FLASH 120
- + FLASH 160
- + FLASH 200
- + 300 HP
- + 400 HP
- + TOUCH HP
- + TOUCH HP (Argon)
- + SURTRON EVAC
- + SURTRON ABC

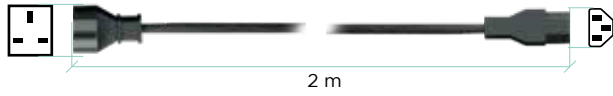


pcs: 1

00100.04



# 00100.05

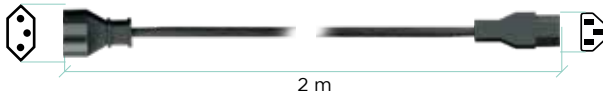


**Description** Power supply cable UK-IEC  
**Cable Length** 2 m (78,74 in)

- + 50 D
- + 80 D
- + 80
- + 120
- + 160
- + 200
- + TOUCH 200
- + FLASH 120
- + FLASH 160
- + FLASH 200
- + 300 HP
- + 400 HP
- + TOUCH HP
- + TOUCH HP (Argon)
- + SURTRON EVAC
- + SURTRON ABC



# 00100.07

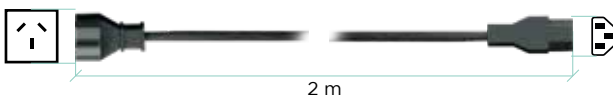


**Description** Power supply cable BR-IEC  
**Cable Length** 2 m (78,74 in)

- + 50 D
- + 80 D
- + 80
- + 120
- + 160
- + 200
- + TOUCH 200
- + FLASH 120
- + FLASH 160
- + FLASH 200
- + 300 HP
- + 400 HP
- + TOUCH HP
- + TOUCH HP (Argon)
- + SURTRON EVAC
- + SURTRON ABC



# 00100.09

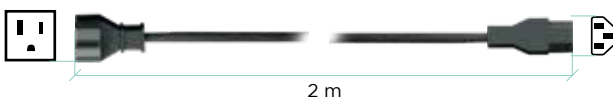


**Description** Power supply cable AU/CN-IEC  
**Cable Length** 2 m (78,74 in)

- + 50 D
- + 80 D
- + 80
- + 120
- + 160
- + 200
- + TOUCH 200
- + FLASH 120
- + FLASH 160
- + FLASH 200
- + 300 HP
- + 400 HP
- + TOUCH HP
- + TOUCH HP (Argon)
- + SURTRON EVAC
- + SURTRON ABC



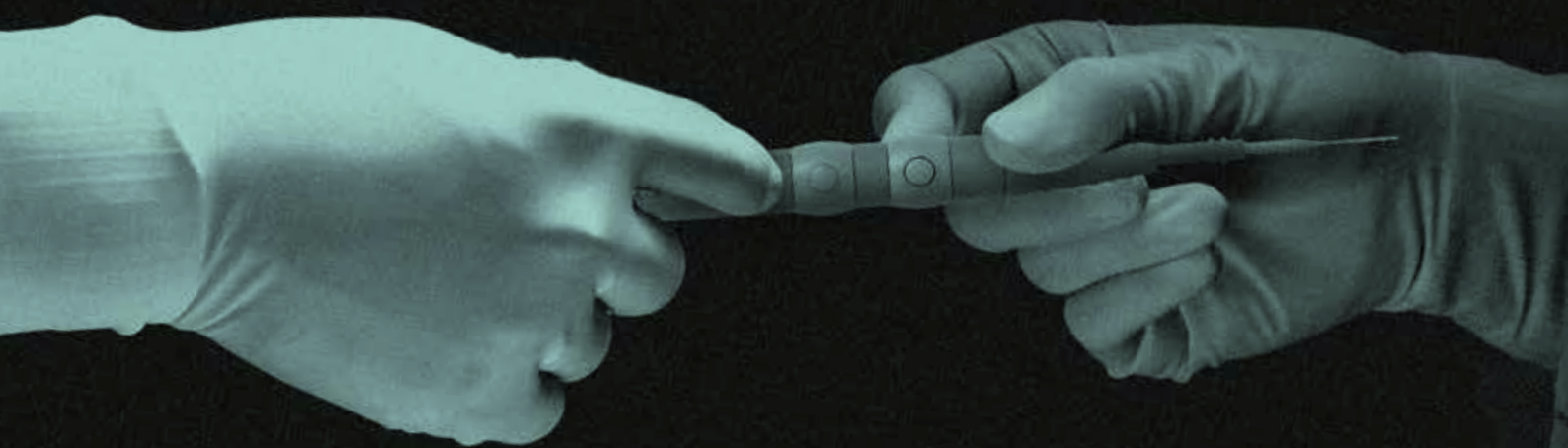
# 00100.10



**Description** Power supply cable JP-IEC  
**Cable Length** 2 m (78,74 in)

- + 50 D
- + 80 D
- + 80
- + 120
- + 160
- + 200
- + TOUCH 200
- + FLASH 120
- + FLASH 160
- + FLASH 200
- + 300 HP
- + 400 HP
- + TOUCH HP
- + TOUCH HP (Argon)
- + SURTRON EVAC
- + SURTRON ABC





# SURGICAL PENCIL

# 00201.02



<b>Description</b>	Handle for microsurgical needle autoclavable
<b>Cable Length</b>	2 m (78,74 in)
<b>Size</b>	10x1x1 cm (3,93x0,39x0,39 in)
<b>Weight</b>	0,05 kg (0,11lb)
<b>Electrode Compatibility</b>	ø0,8 mm (0,031 in)
<b>Sterilization</b>	Autoclavable
<b>Sterilization cycles</b>	100
<b>Compatibility</b>	500500.L

- + 50 D
- + 80 D
- + 80
- + 120
- + 160
- + 200
- + TOUCH 200
- FLASH 120
- FLASH 160
- FLASH 200
- x 300 HP
- x 400 HP
- x TOUCH HP
- x TOUCH HP (Argon)
- x SURTRON EVAC
- x SURTRON ABC



pcs: 1

# 00205.00



<b>Description</b>	Handle with switches
<b>Cable Length</b>	3 m (118,11 in)
<b>Size</b>	18,5x1,6x1,7 cm (7,2x0,62x0,66 in)
<b>Weight</b>	0,03kg (0,06 lb)
<b>Electrode Compatibility</b>	ø2,4 mm (0,94 in)
<b>Sterilization</b>	Autoclavable
<b>Sterilization cycles</b>	100

- + 50 D
- + 80 D
- + 80
- + 120
- + 160
- + 200
- + TOUCH 200
- FLASH 120
- FLASH 160
- FLASH 200
- 300 HP
- 400 HP
- TOUCH HP
- TOUCH HP (Argon)
- x SURTRON EVAC
- x SURTRON ABC



pcs: 1

# 00205.40



<b>Description</b>	Handle with switches
<b>Cable Length</b>	3 m (118,11 in)
<b>Size</b>	18,5x1,6x1,7 cm (7,2x0,62x0,66 in)
<b>Weight</b>	0,03kg (0,06 lb)
<b>Electrode Compatibility</b>	ø4 mm (1,15 in)
<b>Sterilization</b>	Autoclavable
<b>Sterilization cycles</b>	100

- + 50 D
- + 80 D
- + 80
- + 120
- + 160
- + 200
- + TOUCH 200
- FLASH 120
- FLASH 160
- FLASH 200
- 300 HP
- 400 HP
- TOUCH HP
- TOUCH HP (Argon)
- x SURTRON EVAC
- x SURTRON ABC



pcs: 1

**Description** Handle with switches  
**Cable Length** 3 m (118,11 in)  
**Size** 18,5x1,6x1,7 cm (7,2x0,62x0,66 in)  
**Weight** 0,03kg (0,06 lb)  
**Electrode Compatibility** ø2,4 mm (0,94 in)  
**Sterilization** Autoclavable  
**Sterilization cycles** 100



pcs: 1

- 1 50 D
- 1 80 D
- + 80
- + 120
- + 160
- + 200
- + TOUCH 200
- + FLASH 120
- + FLASH 160
- + FLASH 200
- + 300 HP
- + 400 HP
- + TOUCH HP
- + TOUCH HP (Argon)
- x SURTRON EVAC
- x SURTRON ABC

00206.00



**Description** Handle with switches  
**Cable Length** 3m (118,11 in)  
**Size** 18,5x1,6x1,7 cm (7,2x0,62x0,66 in)  
**Weight** 0,03 kg (0,06 lb)  
**Electrode Compatibility** ø4 mm (1,15 in)  
**Sterilization** Autoclavable  
**Sterilization cycles** 100



pcs: 1

- + 50 D
- + 80 D
- + 80
- + 120
- + 160
- + 200
- + TOUCH 200
- + FLASH 120
- + FLASH 160
- + FLASH 200
- + 300 HP
- + 400 HP
- + TOUCH HP
- + TOUCH HP (Argon)
- x SURTRON EVAC
- x SURTRON ABC

00206.40 S



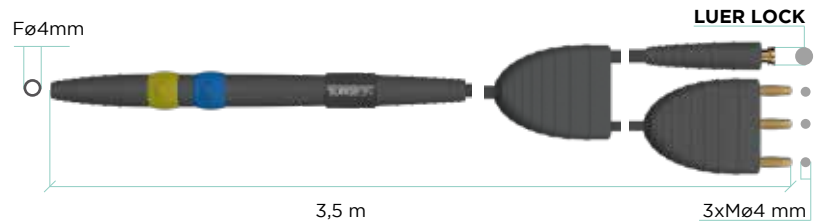
**Description** Handpiece for argon electrodes reusable  
**Cable Length** 3,5 m (137,8 in)  
**Size** 18,5x1,6x1,7 cm (7,2x0,62x0,66 in)  
**Weight** 0,03kg (0,06lb)  
**Electrode Compatibility** ø4 mm (1,15 in)  
**Sterilization** Autoclavable  
**Sterilization cycles** 100



pcs: 1

- x 50 D
- x 80 D
- x 80
- x 120
- x 160
- x 200
- x TOUCH 200
- x FLASH 120
- x FLASH 160
- x FLASH 200
- x 300 HP
- x 400 HP
- x TOUCH HP
- x TOUCH HP (Argon)
- x SURTRON EVAC
- x SURTRON ABC

00420.00



**Description** Disposable handle with finger switches (F4797)  
**Size** 14x2x1 cm (5,5x0,78x0,39 in)  
**Cable Length** 3m (118,11in)  
**Weight** 0,07 kg (0,15 lb)  
**Electrode Compatibility** ø2,4 mm (0,094 in)  
**Sterilization** Sterile EO  
**Sterilization cycles** 0



pcs: 1

- x 50 D
- x 80 D
- + 80
- + 120
- + 160
- + 200
- + TOUCH 200
- + FLASH 120
- + FLASH 160
- + FLASH 200
- 5 300 HP
- 5 400 HP
- 5 TOUCH HP
- 5 TOUCH HP (Argon)
- x SURTRON EVAC
- x SURTRON ABC

755VL



STERILE EO



# FOOT SWITCH

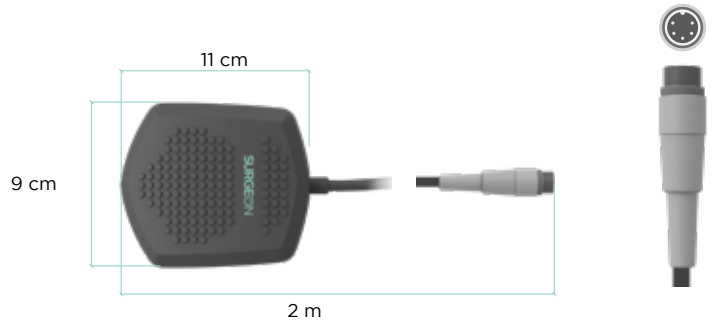
**Description**  
**Cable Length**  
**Size**  
**Weight**

Water-proof foot switch  
 2 m (78,75 in)  
 11x3,5x9 cm (7,2x0,62x0,66 in)  
 0,3 kg (0,66 lb)

- 1 50 D
- 1 80 D
- 1 80
- 1 120
- 1 160
- 1 200
- 1 TOUCH 200
- 1 FLASH 120
- 1 FLASH 160
- 1 FLASH 200
- x 300 HP
- x 400 HP
- x TOUCH HP
- x TOUCH HP (Argon)
- + SURTRON EVAC
- x SURTRON ABC



00304.00



WATER PROOF IP67

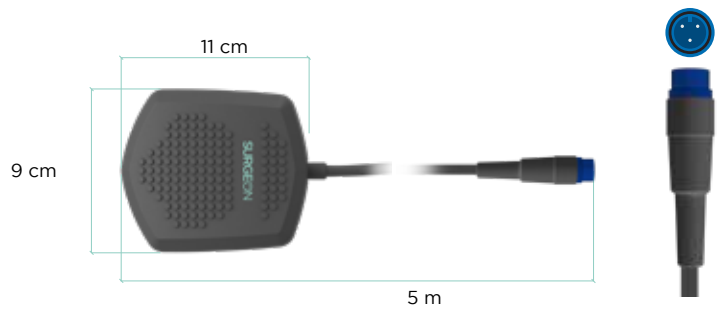
**Description**  
**Cable Length**  
**Size**  
**Weight**

Single water-proof foot switch  
 (3 pins)  
 5 m (196,85 in)  
 11x3,5x9 cm (7,2x0,62x0,66 in)  
 0,3 kg (0,66 lb)

- x 50 D
- x 80 D
- x 80
- x 120
- x 160
- x 200
- x TOUCH 200
- x FLASH 120
- x FLASH 160
- x FLASH 200
- # 300 HP
- # 400 HP
- x TOUCH HP
- x TOUCH HP (Argon)
- + SURTRON EVAC
- x SURTRON ABC



00304.01



WATER PROOF IP67

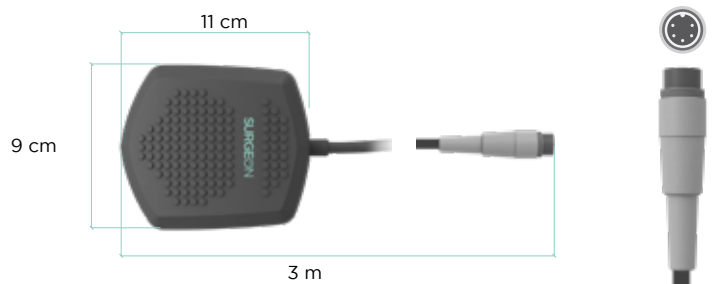
**Description**  
**Cable Length**  
**Size**  
**Weight**

Water-proof foot switch  
 3 m (118,11 in)  
 11x3,5x9 cm (7,2x0,62x0,66 in)  
 0,3 kg (0,66 lb)

- + 50 D
- + 80 D
- + 80
- + 120
- + 160
- + 200
- + TOUCH 200
- + FLASH 120
- + FLASH 160
- + FLASH 200
- x 300 HP
- x 400 HP
- x TOUCH HP
- x TOUCH HP (Argon)
- + SURTRON EVAC
- x SURTRON ABC

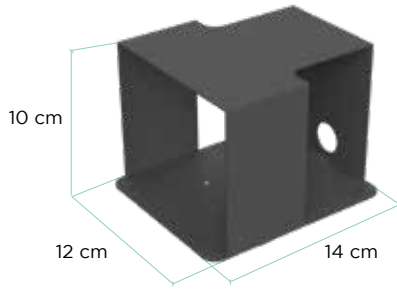


00304.04



WATER PROOF IP67

# 00304.PO



**Description** Protection for single foot switch  
**Cable Length** NO  
**Size** 12x10x14 cm (4,7x3,9x1,64 in)  
**Weight** 0,65 kg (0,143 lb)

- + 50 D
- + 80 D
- + 80
- + 120
- + 160
- + 200
- + TOUCH 200
- + FLASH 120
- + FLASH 160
- + FLASH 200
- x 300 HP
- x 400 HP
- x TOUCH HP
- x TOUCH HP (Argon)
- # SURTRON EVAC
- # SURTRON ABC



pcs: 1

# 00305.03



**Description** Double water proof foot switch  
**Cable Length** 5 m (196,85 in)  
**Size** 35x6x18 cm (13,78x2,36x7 in)  
**Weight** 1.3 kg (2,86lb)

- x 50 D
- x 80 D
- + 80
- + 120
- + 160
- + 200
- + TOUCH 200
- + FLASH 120
- + FLASH 160
- + FLASH 200
- x 300 HP
- x 400 HP
- x TOUCH HP
- x TOUCH HP (Argon)
- x SURTRON EVAC
- x SURTRON ABC



pcs: 1

# 00305.04



**Description** Waterproof double foot switch  
**Cable Length** 5 m (196,85 in)  
**Size** 35x6x18 cm (13,78x2,36x7 in)  
**Weight** 1.3 kg (2,86lb)

- x 50 D
- x 80 D
- x 80
- x 120
- x 160
- x 200
- x TOUCH 200
- x FLASH 120
- x FLASH 160
- x FLASH 200
- 2 300 HP
- 2 400 HP
- x TOUCH HP
- x TOUCH HP (Argon)
- x SURTRON EVAC
- x SURTRON ABC



pcs: 1

WATER PROOF  IP67

WATER PROOF  IP67

**Description** Waterproof double foot switch  
**Cable Length** 5 m (196,85 in)  
**Size** 35x6x18 cm (13,78x2,36x7 in)  
**Weight** 1.3 kg (2,86lb)

x 50 D  
 x 80 D  
 x 80  
 x 120  
 x 160  
 x 200  
 x TOUCH 200  
 x FLASH 120  
 x FLASH 160  
 x FLASH 200  
 x 300 HP  
 x 400 HP  
 x 1 TOUCH HP  
 x 1 TOUCH HP (Argon)  
 x SURTRON EVAC  
 x SURTRON ABC



00305.06



**Description** Waterproof double foot switch with selector  
**Cable Length** 5 m (196,85 in)  
**Size** 35x6x18 cm (13,78x2,36x7 in)  
**Weight** 1.3 kg (2,86lb)

x 50 D  
 x 80 D  
 x 80  
 x 120  
 x 160  
 x 200  
 x + TOUCH 200  
 x FLASH 120  
 x FLASH 160  
 x # FLASH 200  
 x 300 HP  
 x 400 HP  
 x TOUCH HP  
 x TOUCH HP (Argon)  
 x SURTRON EVAC  
 x SURTRON ABC



00306.03



**Description** Waterproof double foot switch with selector  
**Cable Length** 5 m (196,85 in)  
**Size** 35x6x18 cm (13,78x2,36x7 in)  
**Weight** 1.3 kg (2,86lb)

x 50 D  
 x 80 D  
 x 80  
 x 120  
 x 160  
 x 200  
 x TOUCH 200  
 x FLASH 120  
 x FLASH 160  
 x FLASH 200  
 x 300 HP  
 x 400 HP  
 x 1 TOUCH HP  
 x 1 TOUCH HP (Argon)  
 x SURTRON EVAC  
 x SURTRON ABC



00306.06





**NEU  
TRAL**

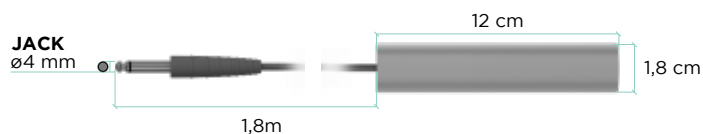
**Description** Rod neutral electrode with cable  
**Cable Length** 1,8 m (70,86 in)  
**Size** 12xø1,8 cm (4,72x0,7 in)  
**Weight** 0,1 kg (0,22 lb)  
**Sterilization** NO  
**Sterilization cycles** NO

- + 50 D
- + 80 D
- + 80
- + 120
- + 160
- + 200
- + TOUCH 200
- + FLASH 120
- + FLASH 160
- + FLASH 200
- + 300 HP
- + 400 HP
- + TOUCH HP
- + TOUCH HP (Argon)
- + SURTRON EVAC
- + SURTRON ABC



pcs: 1

00400.00



MAX. 120W

Integrated connection

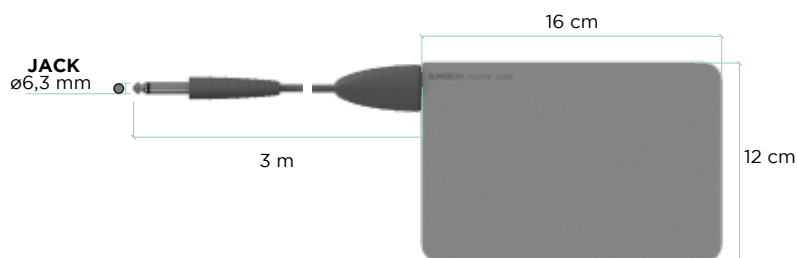
**Description** Steel neutral electrode with cable  
**Cable Length** 3 m (118,11 in)  
**Size** 16x12 cm (6,3x4,7 in)  
**Weight** 0,1 kg (0,22 lb)  
**Sterilization** NO  
**Sterilization cycles** NO

- + 50 D
- + 80 D
- + 80
- + 120
- + 160
- + 200
- + TOUCH 200
- + FLASH 120
- + FLASH 160
- + FLASH 200
- + 300 HP
- + 400 HP
- + TOUCH HP
- + TOUCH HP (Argon)
- + SURTRON EVAC
- + SURTRON ABC



pcs: 1

00401.00



Integrated connection

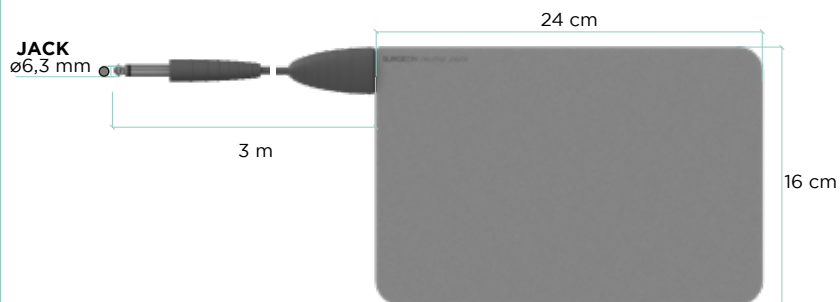
**Description** Steel neutral electrode with cable  
**Cable Length** 3 m (118,11 in)  
**Size** 24x16 cm (9,4x6,3 in)  
**Weight** 0,1 kg (0,22 lb)  
**Sterilization** NO  
**Sterilization cycles** NO

- + 50 D
- + 80 D
- + 80
- + 120
- + 160
- + 200
- + TOUCH 200
- + FLASH 120
- + FLASH 160
- + FLASH 200
- + 300 HP
- + 400 HP
- + TOUCH HP
- + TOUCH HP (Argon)
- + SURTRON EVAC
- + SURTRON ABC



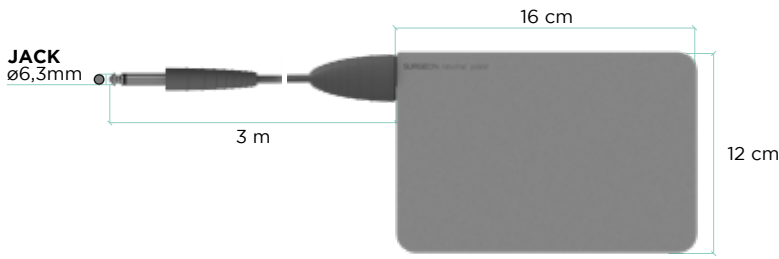
pcs: 1

00401.01



Integrated connection

# 00401.02



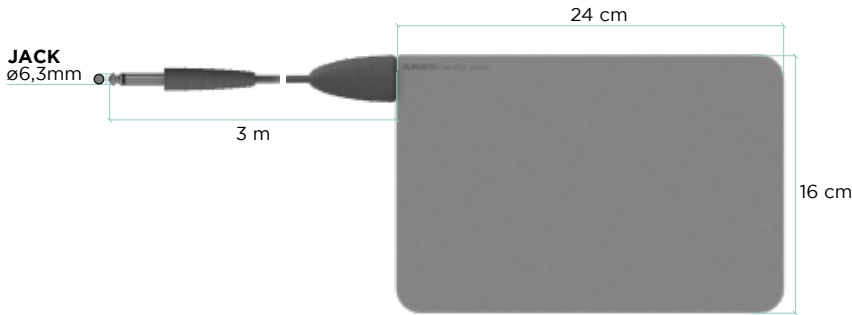
Integrated connection

<b>Description</b>	Steel neutral electrode autoclavable
<b>Size WxHxD</b>	16x12x0,4 cm (6,3x4,7x0,15 in)
<b>Cable Length</b>	3 m (118,11 in)
<b>Weight</b>	0,1 kg (0,22 lb)
<b>Sterilization</b>	Autoclavable
<b>Sterilization cycles</b>	100

- + 50 D
- + 80 D
- + 80
- + 120
- + 160
- + 200
- + TOUCH 200
- + FLASH 120
- + FLASH 160
- + FLASH 200
- x 300 HP
- x 400 HP
- x TOUCH HP
- x TOUCH HP (Argon)
- x SURTRON EVAC
- x SURTRON ABC



# 00401.03



Integrated connection

<b>Description</b>	Steel neutral electrode autoclavable
<b>Size WxHxD</b>	24x16x0,4 cm (9,4x6,3x0,15 in)
<b>Cable Length</b>	3 m (118,11 in)
<b>Weight</b>	0,1 kg (0,22 lb)
<b>Sterilization</b>	Autoclavable
<b>Sterilization cycles</b>	100

- + 50 D
- + 80 D
- + 80
- + 120
- + 160
- + 200
- + TOUCH 200
- + FLASH 120
- + FLASH 160
- + FLASH 200
- + 300 HP
- + 400 HP
- + TOUCH HP
- + TOUCH HP (Argon)
- x SURTRON EVAC
- x SURTRON ABC



# 00401.10



<b>Description</b>	Steel neutral electrode FLEX
<b>Size WxHxD</b>	12x21x0,2 cm (4,7x8,2x0,078 in)
<b>Cable Length</b>	NO
<b>Weight</b>	0,01 Kg (0,02lb)
<b>Sterilization</b>	Autoclavable
<b>Sterilization cycles</b>	100
<b>Compatibility</b>	00404.08, 00404.09, 00404.10, 00404.11

- + 50 D
- + 80 D
- + 80
- + 120
- + 160
- + 200
- + TOUCH 200
- + FLASH 120
- + FLASH 160
- + FLASH 200
- + 300 HP
- + 400 HP
- + TOUCH HP
- + TOUCH HP (Argon)
- x SURTRON EVAC
- x SURTRON ABC



**Description** Steel neutral electrode FLEX with cable

**Size WxHxD** 12x21x0,2 cm (4,7x8,2x0,078 in)

**Cable Length** 3m (118,11 in)

**Weight** 0,01 Kg (0,02lb)

**Sterilization** NO

**Sterilization cycles** NO

- + 50 D
- + 80 D
- + 80
- + 120
- + 160
- + 200
- + TOUCH 200
- + FLASH 120
- + FLASH 160
- + FLASH 200
- + 300 HP
- + 400 HP
- + TOUCH HP
- + TOUCH HP (Argon)
- x SURTRON EVAC
- x SURTRON ABC



00401.11



Integrated connection

**Description** Steel neutral electrode FLEX with cable autoclavable

**Size WxHxD** 12x21x0,2 cm (4,7x8,2x0,078 in)

**Cable Length** 3m (118,11 in)

**Weight** 0,01 Kg (0,02lb)

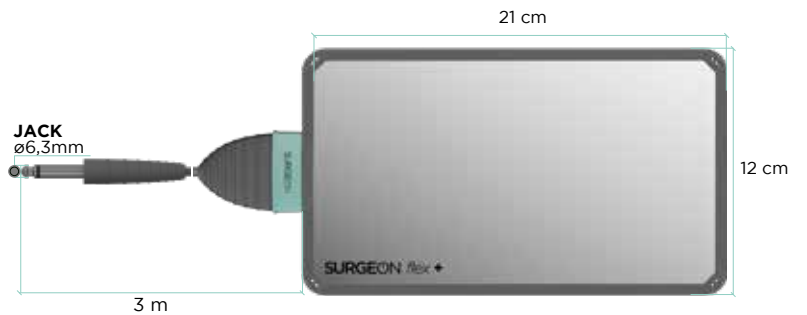
**Sterilization** Autoclavable

**Sterilization cycles** 100

- + 50 D
- + 80 D
- + 80
- + 120
- + 160
- + 200
- + TOUCH 200
- + FLASH 120
- + FLASH 160
- + FLASH 200
- + 300 HP
- + 400 HP
- + TOUCH HP
- + TOUCH HP (Argon)
- x SURTRON EVAC
- x SURTRON ABC



00401.12



Integrated connection

134°C



**Description** Steel neutral electrode FLEX S

**Size WxHxD** 12x21x0,2 cm (4,7x8,2x0,078 in)

**Cable Length** NO

**Weight** 0,01 Kg (0,02 lb)

**Sterilization** Autoclavable

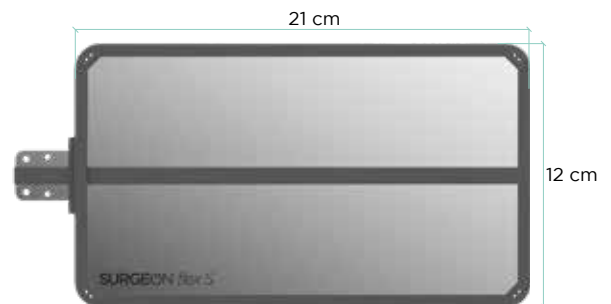
**Sterilization cycles** 100

**Compatibility** 00404.08, 00404.09, 00404.10, 00404.11

- # 50 D
- + 80 D
- + 80
- + 120
- + 160
- + 200
- + TOUCH 200
- + FLASH 120
- + FLASH 160
- + FLASH 200
- + 300 HP
- + 400 HP
- + TOUCH HP
- + TOUCH HP (Argon)
- x SURTRON EVAC
- x SURTRON ABC



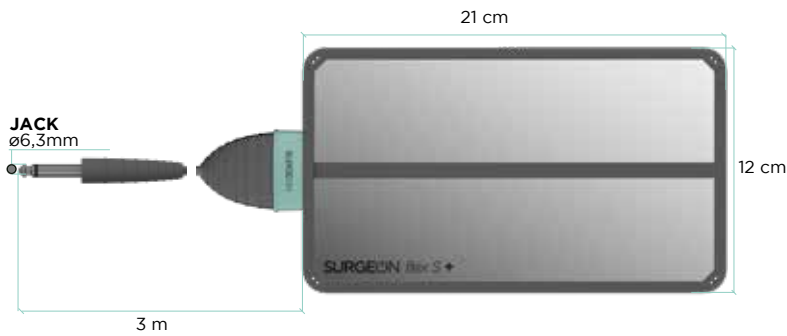
00401.20



134°C



# 00401.21



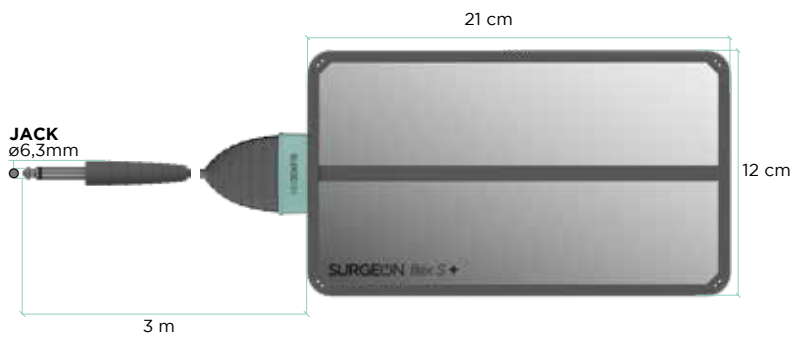
**Description** Steel neutral electrode FLEX S with cable  
**Size WxHxD** 12x21x0,2 cm (4,7x8,2x0,078 in)  
**Cable Length** 3 m (118,11 in)  
**Weight** 0,01 Kg (0,02 lb)  
**Sterilization** NO  
**Sterilization cycles** NO

- # 50 D
- + 80 D
- + 80
- + 120
- + 160
- + 200
- + TOUCH 200
- + FLASH 120
- + FLASH 160
- + FLASH 200
- + 300 HP
- + 400 HP
- + TOUCH HP
- + TOUCH HP (Argon)
- x SURTRON EVAC
- x SURTRON ABC



pcs: 1

# 00401.22



**Description** Steel neutral electrode FLEX S with cable autoclavable  
**Size WxHxD** 12x21x0,2 cm (4,7x8,2x0,078 in)  
**Cable Length** 3 m (118,11 in)  
**Weight** 0,01 kg (0,02 lb)  
**Sterilization** Autoclavable  
**Sterilization cycles** 100

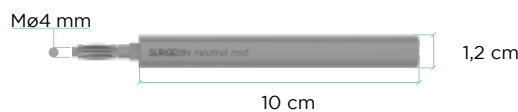
- # 50 D
- + 80 D
- + 80
- + 120
- + 160
- + 200
- + TOUCH 200
- + FLASH 120
- + FLASH 160
- + FLASH 200
- + 300 HP
- + 400 HP
- + TOUCH HP
- + TOUCH HP (Argon)
- x SURTRON EVAC
- x SURTRON ABC



pcs: 1



# 00403.01



**Description** Steel neutral electrode autoclavable  
**Size WxHxD** 10x1,2x1,2 cm (3,934x0,47x0,47 in)  
**Cable Length** NO  
**Weight** 0,1 kg (0,22 lb)  
**Sterilization** Autoclavable  
**Sterilization cycles** 100  
**Compatibility** 00404.08, 00404.09, 00404.10, 00404.11

- 50 D
- 1 x 80 D
- x 80
- x 120
- x 160
- x 200
- x TOUCH 200
- x FLASH 120
- x FLASH 160
- x FLASH 200
- x 300 HP
- x 400 HP
- x TOUCH HP
- x TOUCH HP (Argon)
- x SURTRON EVAC
- x SURTRON ABC



pcs: 1



**Description** Rod neutral electrode  
**Size WxHxD** 14x2x2 cm (5,5x0,78x0,78 in)  
**Cable Length** NO  
**Weight** 0,1 Kg (0,22 lb)  
**Sterilization** Autoclavable  
**Sterilization cycles** 100  
**Compatibility** 00404.02, 00404.04

+ 50 D  
 x 80 D  
 x 80  
 x 120  
 x 160  
 x 200  
 x TOUCH 200  
 x FLASH 120  
 x FLASH 160  
 x FLASH 200  
 x 300 HP  
 x 400 HP  
 x TOUCH HP  
 x TOUCH HP (Argon)  
 x SURTRON EVAC  
 x SURTRON ABC



00403.02

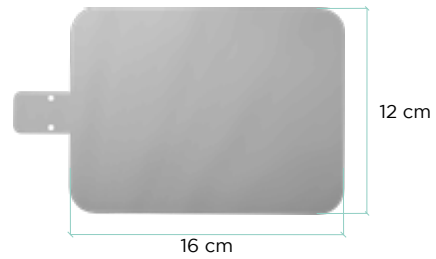


**Description** Steel neutral electrode  
**Size WxHxD** 16x12x0,02 cm (6,3x4,7x0,008 in)  
**Cable Length** NO  
**Weight** 0,1 kg (0,22 lb)  
**Sterilization** Autoclavable  
**Sterilization cycles** 100  
**Compatibility** 00404.08, 00404.09, 00404.10, 00404.11

+ 50 D  
 1 80 D  
 1 80  
 1 120  
 1 160  
 1 200  
 1 TOUCH 200  
 1 FLASH 120  
 1 FLASH 160  
 1 FLASH 200  
 x 300 HP  
 x 400 HP  
 x TOUCH HP  
 x TOUCH HP (Argon)  
 x SURTRON EVAC  
 x SURTRON ABC



5365A

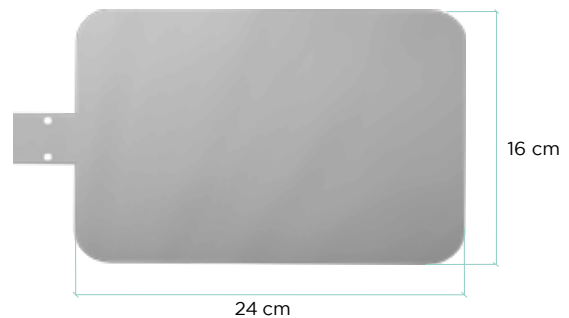


**Description** Steel neutral electrode  
**Size WxHxD** 24x16x0,02 cm (9,4x6,3x0,008 in)  
**Cable Length** NO  
**Weight** 0,1 kg (0,22 lb)  
**Sterilization** Autoclavable  
**Sterilization cycles** 100  
**Compatibility** 00404.08, 00404.09, 00404.10, 00404.11

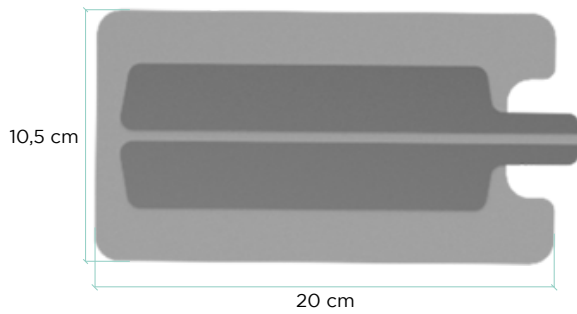
+ 50 D  
 1 80 D  
 1 80  
 1 120  
 1 160  
 1 200  
 1 TOUCH 200  
 1 FLASH 120  
 1 FLASH 160  
 1 FLASH 200  
 x 300 HP  
 x 400 HP  
 + TOUCH HP  
 + TOUCH HP (Argon)  
 x SURTRON EVAC  
 x SURTRON ABC



6429A



# F7920



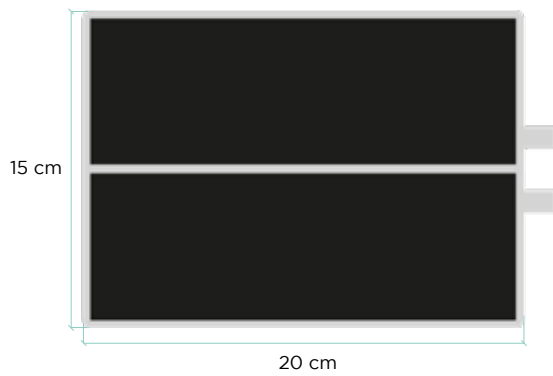
<b>Description</b>	Disposable split neutral electrode (F7820)
<b>Size WxHxD</b>	20x10,5x0,2 cm (7,8x4,1x0,078 in)
<b>Cable Length</b>	NO
<b>Weight</b>	0,01 Kg (0,02 lb)
<b>Sterilization</b>	NO
<b>Sterilization cycles</b>	NO
<b>Compatibility</b>	00404.08, 00404.09, 00404.10, 00404.11

- # 50 D
- + 80 D
- + 80
- + 120
- + 160
- 2 200
- 2 TOUCH 200
- 2 FLASH 120
- 2 FLASH 160
- 2 FLASH 200
- 5 300 HP
- 5 400 HP
- 5 TOUCH HP
- 5 TOUCH HP (Argon)
- x SURTRON EVAC
- x SURTRON ABC



pcs: 1

# F7930



<b>Description</b>	Conductive rubber split neutral electrode
<b>Size WxHxD</b>	20x10,5x0,4 cm (7,8x4,1x0,15 in)
<b>Cable Length</b>	NO
<b>Weight</b>	0,1 Kg (0,2lb)
<b>Sterilization</b>	NO
<b>Sterilization cycles</b>	NO
<b>Compatibility</b>	00404.07

- # 50 D
- + 80 D
- + 80
- + 120
- + 160
- + 200
- + TOUCH 200
- + FLASH 120
- + FLASH 160
- + FLASH 200
- + 300 HP
- + 400 HP
- + TOUCH HP
- + TOUCH HP (Argon)
- x SURTRON EVAC
- x SURTRON ABC

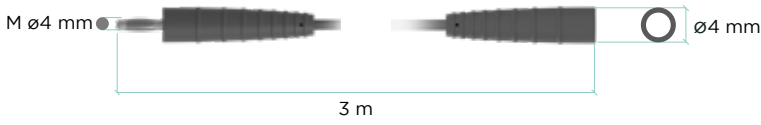


pcs: 1



# CON NECT ION

# 00402.00



**Description** Monopolar Cable M4-F2.8  
**Weight** 0,06 kg (0,13lb)  
**Cable Length** 3 m (118,11 in)  
**Sterilization** Autoclavable  
**Sterilization cycles** 100

- # 50 D
- # 80 D
- # 80
- + 120
- + 160
- + 200
- + TOUCH 200
- + FLASH 120
- + FLASH 160
- + FLASH 200
- + 300 HP
- + 400 HP
- + TOUCH HP
- + TOUCH HP (Argon)
- x SURTRON EVAC
- x SURTRON ABC



# 00402.01



**Description** Monopolar Cable M4-F4  
**Weight** 0,06 kg (0,13 lb)  
**Cable Length** 3 m (118,11 in)  
**Sterilization** Autoclavable  
**Sterilization cycles** 100

- # 50 D
- # 80 D
- # 80
- + 120
- + 160
- + 200
- + TOUCH 200
- + FLASH 120
- + FLASH 160
- + FLASH 200
- + 300 HP
- + 400 HP
- + TOUCH HP
- + TOUCH HP (Argon)
- x SURTRON EVAC
- x SURTRON ABC



# 00402.02

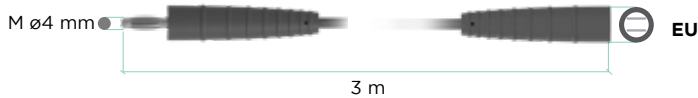


**Description** Monopolar Cable M4-MP4  
**Weight** 0,06 kg (0,13 lb)  
**Cable Length** 3 m (118,11 in)  
**Sterilization** Autoclavable  
**Sterilization cycles** 100

- # 50 D
- # 80 D
- # 80
- + 120
- + 160
- + 200
- + TOUCH 200
- + FLASH 120
- + FLASH 160
- + FLASH 200
- + 300 HP
- + 400 HP
- + TOUCH HP
- + TOUCH HP (Argon)
- x SURTRON EVAC
- x SURTRON ABC



# 00402.03



**Description** Monopolar Cable M4-EU  
**Weight** 0,06 kg (0,13 lb)  
**Cable Length** 3 m (118,11 in)  
**Sterilization** Autoclavable  
**Sterilization cycles** 100

- # 50 D
- # 80 D
- # 80
- + 120
- + 160
- + 200
- + TOUCH 200
- + FLASH 120
- + FLASH 160
- + FLASH 200
- + 300 HP
- + 400 HP
- + TOUCH HP
- + TOUCH HP (Argon)
- x SURTRON EVAC
- x SURTRON ABC



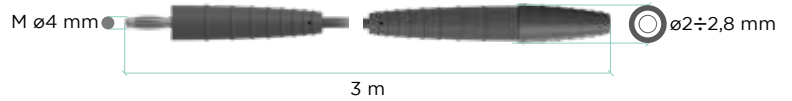
# 00402.04

**Description** Monopolar Cable M4-F2.M  
**Weight** 0,06 kg (0,13 lb)  
**Cable Length** 3 m (118,11 in)  
**Sterilization** Autoclavable  
**Sterilization cycles** 100

- # 50 D
- + # 80 D
- + # 80
- + # 120
- + # 160
- + # 200
- + TOUCH 200
- + FLASH 120
- + FLASH 160
- + FLASH 200
- + 300 HP
- + 400 HP
- + TOUCH HP
- + TOUCH HP (Argon)
- x SURTRON EVAC
- x SURTRON ABC



pcs: 1

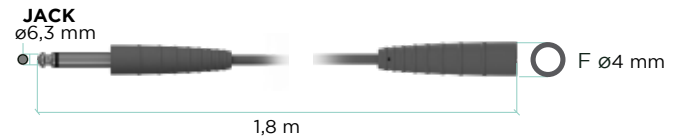


**Description** Monopolar Cable M4-F2.M  
**Weight** 0,06 kg (0,13 lb)  
**Cable Length** 1,8 m (70,86 in)  
**Sterilization** NO  
**Sterilization cycles** NO

- 50 D
- x 80 D
- x 80
- x 120
- x 160
- x 200
- x TOUCH 200
- x FLASH 120
- x FLASH 160
- x FLASH 200
- x 300 HP
- x 400 HP
- x TOUCH HP
- x TOUCH HP (Argon)
- x SURTRON EVAC
- x SURTRON ABC



pcs: 1



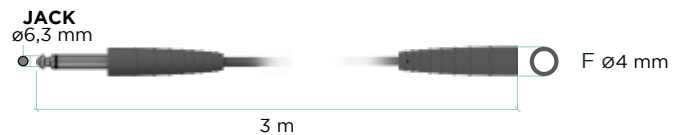
# 00404.02

**Description** Cable for rod neutral electrode autoclavable  
**Cable Length** 3 m (118 in)  
**Unit Connection** 4 mm (0,157 in)  
**Sterilization** Autoclavable  
**Sterilization cycles** 100

- + 50 D
- x 80 D
- x 80
- x 120
- x 160
- x 200
- x TOUCH 200
- x FLASH 120
- x FLASH 160
- x FLASH 200
- x 300 HP
- x 400 HP
- x TOUCH HP
- x TOUCH HP (Argon)
- x SURTRON EVAC
- x SURTRON ABC



pcs: 1



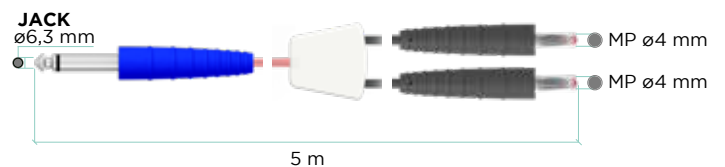
# 00404.04

**Description** Cable for neutral plate F7930  
**Cable Length** 5m (196,85 in)  
**Unit Connection** 4 mm (0,157 in)  
**Accessory Connection** 2,8 mm (0,110 in)  
**Compatibility** F7930

- # 50 D
- + 80 D
- + 80
- + 120
- + 160
- + 200
- + TOUCH 200
- + FLASH 120
- + FLASH 160
- + FLASH 200
- + 300 HP
- + 400 HP
- + TOUCH HP
- + TOUCH HP (Argon)
- x SURTRON EVAC
- x SURTRON ABC

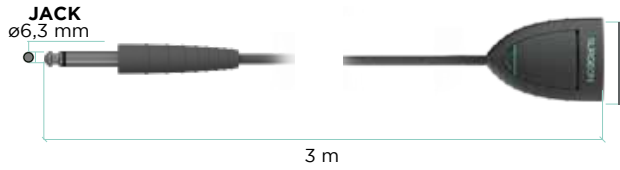


pcs: 1



# 00404.07

# 00404.08



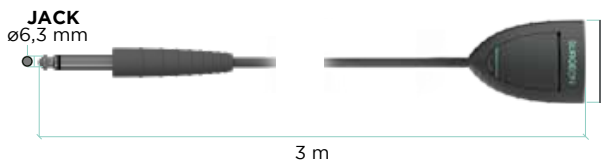
**Description** Cable for neutral electrode disposable type 5365/6429/FLEX  
**Weight** 0,06 kg (0,13 lb)  
**Cable Length** 3 m (118,11 in)  
**Sterilization** NO  
**Sterilization cycles** NO  
**Compatibility** 0350, F790, 00401.10, 00401.20, 5365A, 6429A

- + 50 D
- + 80 D
- + 80
- + 120
- + 160
- + 200
- + TOUCH 200
- + FLASH 120
- + FLASH 160
- + FLASH 200
- + 300 HP
- + 400 HP
- + TOUCH HP
- + TOUCH HP (Argon)
- x SURTRON EVAC
- x SURTRON ABC



pcs: 1

# 00404.09



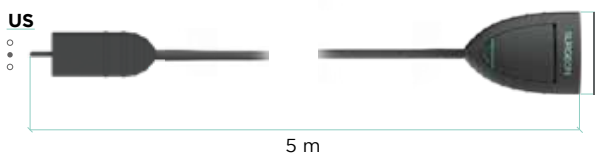
**Description** Cable for connection neutral disposable 5365-6429/FLEX FLEX S AUTOCLAVE  
**Weight** 0,06 kg (0,13 lb)  
**Cable Length** 3 m (118,11 in)  
**Sterilization** Autoclavable  
**Sterilization cycles** 100  
**Compatibility** 0350, F790, 00401.10, 00401.20, 5365A, 6429A

- + 50 D
- + 80 D
- + 80
- + 120
- + 160
- + 200
- + TOUCH 200
- + FLASH 120
- + FLASH 160
- + FLASH 200
- + 300 HP
- + 400 HP
- + TOUCH HP
- + TOUCH HP (Argon)
- x SURTRON EVAC
- x SURTRON ABC



pcs: 1

# 00404.10



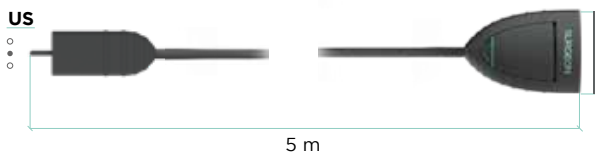
**Description** Cable for neutral plate US type  
**Weight** 0,06 kg (0,13 lb)  
**Cable Length** 5 m (169,85 in)  
**Sterilization** NO  
**Sterilization cycles** NO  
**Compatibility** 0350, F790, 00401.10, 00401.20, 5365A, 6429A

- # 50 D
- # 80 D
- # 80
- # 120
- # 160
- # 200
- # TOUCH 200
- # FLASH 120
- # FLASH 160
- # FLASH 200
- # 300 HP
- # 400 HP
- # TOUCH HP
- # TOUCH HP (Argon)
- x SURTRON EVAC
- x SURTRON ABC



pcs: 1

# 00404.11



**Description** Cable for neutral plate US type AUTOCLAVE  
**Weight** 0,06 kg (0,13 lb)  
**Cable Length** 5 m (169,85 in)  
**Sterilization** Autoclavable  
**Sterilization cycles** 100  
**Compatibility** 0350, F790, 00401.10, 00401.20, 5365A, 6429A

- # 50 D
- # 80 D
- # 80
- # 120
- # 160
- # 200
- # TOUCH 200
- # FLASH 120
- # FLASH 160
- # FLASH 200
- # 300 HP
- # 400 HP
- # TOUCH HP
- # TOUCH HP (Argon)
- x SURTRON EVAC
- x SURTRON ABC



pcs: 1



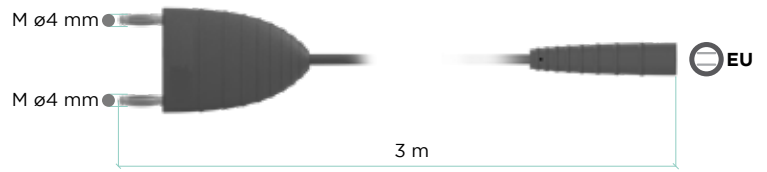
**Description** Bipolar cable EUR  
**Weight** 0,06 kg (0,13 lb)  
**Cable Length** 3 m (118,11 in)  
**Sterilization** NO  
**Sterilization cycles** NO  
**Compatibility** 310 Bipolar Forceps series

- x 50 D
- x 80 D
- + 80
- + 120
- + 160
- + 200
- + TOUCH 200
- + FLASH 120
- + FLASH 160
- + FLASH 200
- + 300 HP
- + 400 HP
- + TOUCH HP
- + TOUCH HP (Argon)
- x SURTRON EVAC
- x SURTRON ABC



pcs: 1

00411.00



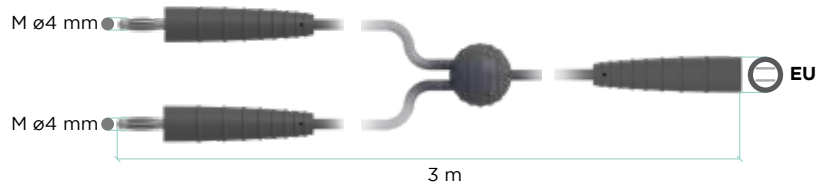
**Description** Bipolar cable TWIN  
**Weight** 0,06 kg (0,13 lb)  
**Cable Length** 3 m (118,11 in)  
**Sterilization** NO  
**Sterilization cycles** NO  
**Compatibility** 310 Bipolar Forceps series

- x 50 D
- x 80 D
- # 80
- # 120
- # 160
- # 200
- + TOUCH 200
- + FLASH 120
- + FLASH 160
- + FLASH 200
- + 300 HP
- + 400 HP
- + TOUCH HP
- + TOUCH HP (Argon)
- x SURTRON EVAC
- x SURTRON ABC



pcs: 1

00412.00



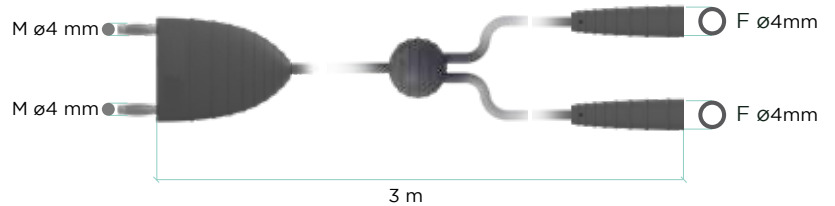
**Description** Artery Sealer Bipolar cable  
**Weight** 0,06 kg (0,13 lb)  
**Cable Length** 3 m (118,11 in)  
**Sterilization** NO  
**Sterilization cycles** NO  
**Compatibility** 110-750NS, 110-755NS, 110-760NS,

- x 50 D
- x 80 D
- # 80
- # 120
- # 160
- # 200
- + TOUCH 200
- + FLASH 120
- + FLASH 160
- + FLASH 200
- + 300 HP
- + 400 HP
- + TOUCH HP
- + TOUCH HP (Argon)
- x SURTRON EVAC
- x SURTRON ABC



pcs: 1

00413.00



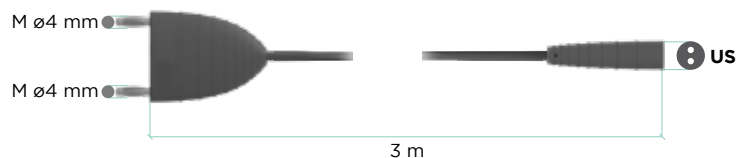
**Description** Bipolar cable US 3m  
**Weight** 0,60 kg (0,13 lb)  
**Cable Length** 3 m (118,11 in)  
**Sterilization** NO  
**Sterilization cycles** NO  
**Compatibility** 110-700

- x 50 D
- x 80 D
- # 80
- # 120
- # 160
- # 200
- + TOUCH 200
- + FLASH 120
- + FLASH 160
- + FLASH 200
- + 300 HP
- + 400 HP
- + TOUCH HP
- + TOUCH HP (Argon)
- x SURTRON EVAC
- x SURTRON ABC

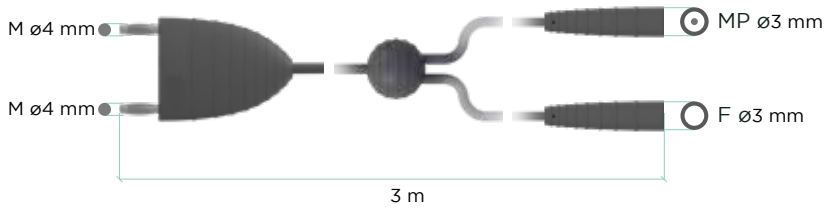


pcs: 1

00414.00



# 00415.00



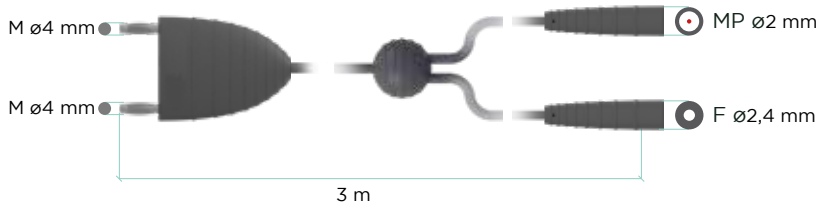
**Description** Bipolar cable ENDO (MP3 - F3)  
**Weight** 0,06 kg (0,13 lb)  
**Cable Length** 3 m (118,11 in)  
**Sterilization** Autoclavable  
**Sterilization cycles** 100

- x 50 D
- x 80 D
- x 80
- x 120
- + 160
- + 200
- + TOUCH 200
- x FLASH 120
- + FLASH 160
- + FLASH 200
- + 300 HP
- + 400 HP
- + TOUCH HP
- + TOUCH HP (Argon)
- x SURTRON EVAC
- x SURTRON ABC



pcs: 1

# 00416.00



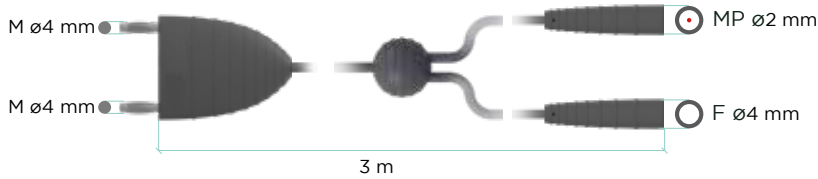
**Description** Bipolar cable ENDO (MP3 - F3)  
**Weight** 0,06 kg (0,13 lb)  
**Cable Length** 3 m (118,11 in)  
**Sterilization** Autoclavable  
**Sterilization cycles** 100

- x 50 D
- x 80 D
- x 80
- x 120
- + 160
- + 200
- + TOUCH 200
- x FLASH 120
- + FLASH 160
- + FLASH 200
- + 300 HP
- + 400 HP
- + TOUCH HP
- + TOUCH HP (Argon)
- x SURTRON EVAC
- x SURTRON ABC



pcs: 1

# 00417.00



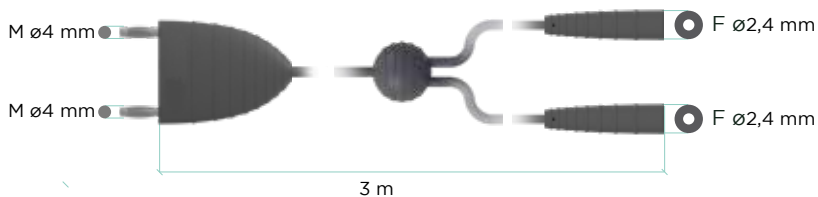
**Description** Bipolar cable ENDO3 (MP2-F4)  
**Weight** 0,06 kg (0,13 lb)  
**Cable Length** 3 m (118,11 in)  
**Sterilization** Autoclavable  
**Sterilization cycles** 100

- x 50 D
- x 80 D
- x 80
- x 120
- + 160
- + 200
- + TOUCH 200
- x FLASH 120
- + FLASH 160
- + FLASH 200
- + 300 HP
- + 400 HP
- + TOUCH HP
- + TOUCH HP (Argon)
- x SURTRON EVAC
- x SURTRON ABC



pcs: 1

# 00418.00



**Description** Bipolar cable ENDO3 (MP2-F4)  
**Weight** 0,06 kg (0,13 lb)  
**Cable Length** 3 m (118,11 in)  
**Sterilization** Autoclavable  
**Sterilization cycles** 100

- x 50 D
- x 80 D
- x 80
- x 120
- + 160
- + 200
- + TOUCH 200
- x FLASH 120
- + FLASH 160
- + FLASH 200
- + 300 HP
- + 400 HP
- + TOUCH HP
- + TOUCH HP (Argon)
- x SURTRON EVAC
- x SURTRON ABC

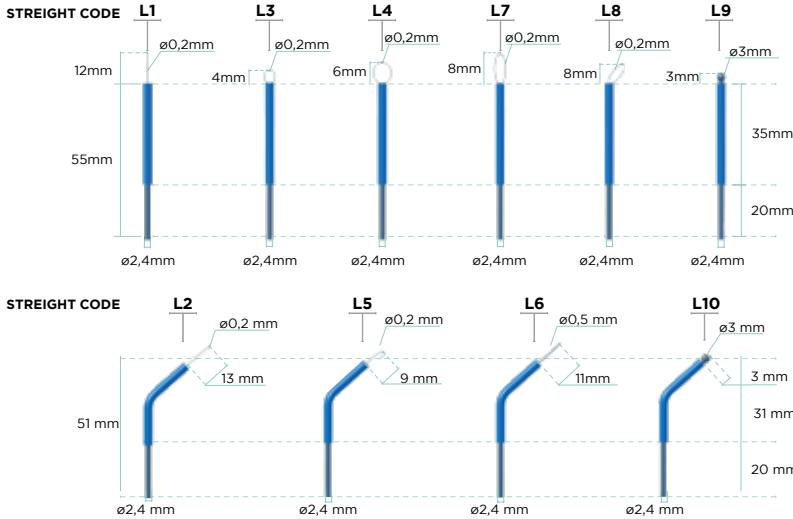


pcs: 1



# ELEC TRODE

# 00500.00



**Description** Kit of assorted electrode length 5 cm (10pcs)

**SINGLE ITEM**

- 500500.L1: Straight thin wire electrode (5pcs)
- 500500.L3: Loop electrode ø4 mm (5pcs)
- 500500.L4: Loop electrode ø6 mm (5pcs)
- 500500.L7: Drop electrode length (5pcs)
- 500500.L8: Noose electrode length (5pcs)
- 500500.L9: Straight ball electrode ø3 mm (5pcs)
- 500500.L2: Bent thin wire electrode (5pcs)
- 500500.L5: Drop electrode length (5pcs)
- 500500.L6: Bent thick wire electrode (5pcs)
- 500500.L10: Bent5 ball electrode ø3 mm (5pcs)

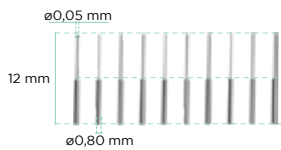
**Compatibility** 00205.00, 00206.00, 755VL

50 D	TOUCH 200
80 D	FLASH 120
80	FLASH 160
120	FLASH 200
160	300 HP
200	400 HP
200	400 HP
1	TOUCH HP
1	TOUCH HP (Argon)
1	SURTRON EVAC
1	SURTRON ABC



kit 00500.00: assorted pcs 10  
for each items from L1 to L10: pcs 5

# 500500.L11



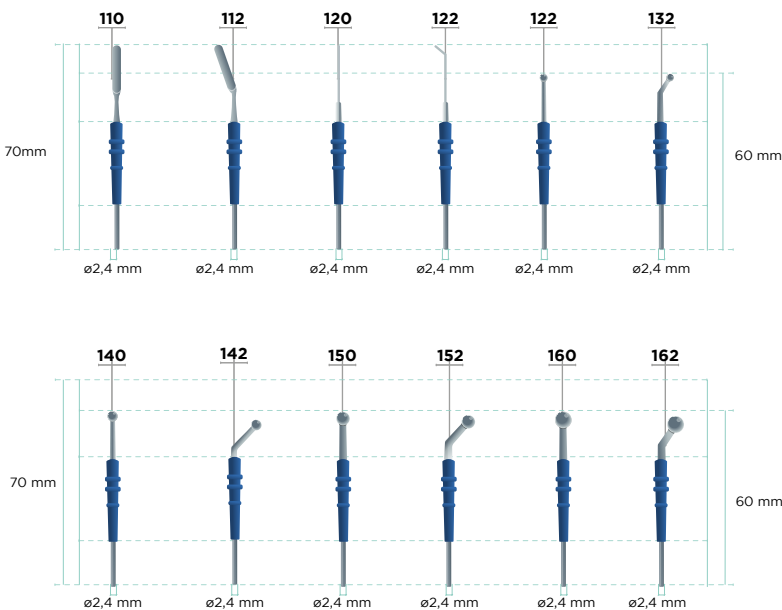
**Description** Needles for micro-surgery length 1cm  
**Weight** 0,002 kg (0,004 lb)  
**Size** 12x0,05x0,8 mm (0,47x0,002x0,03 in)  
**Sterilization** Autoclavable  
**Sterilisation cycles** NO

50 D	TOUCH 200
80 D	FLASH 120
80	FLASH 160
120	FLASH 200
160	300 HP
200	400 HP
200	400 HP
1	TOUCH HP
1	TOUCH HP (Argon)
1	SURTRON EVAC
1	SURTRON ABC



pcs: 10

# 152 Short



**Description**

- 152-110 Blade Electrode 7 cm
- 152-112 Blade Curved Electrode 7 cm
- 152-120 Needle Curved Electrode 7 cm
- 152-122 Needle Electrode 13 cm
- 152-130 Ball Electrode ø2 mm 6 cm
- 152-132 Ball Curved Electrode ø2 mm 5 cm
- 152-140 Ball Electrode ø3 mm 6cm
- 152-142 Ball Curved Electrode ø3 mm 6 cm

50 D	TOUCH 200
80 D	FLASH 120
80	FLASH 160
120	FLASH 200
160	300 HP
200	400 HP
200	400 HP
1	TOUCH HP
1	TOUCH HP (Argon)
1	SURTRON EVAC
1	SURTRON ABC

**Compatibility** 00205.00, 00206.00, 755VL

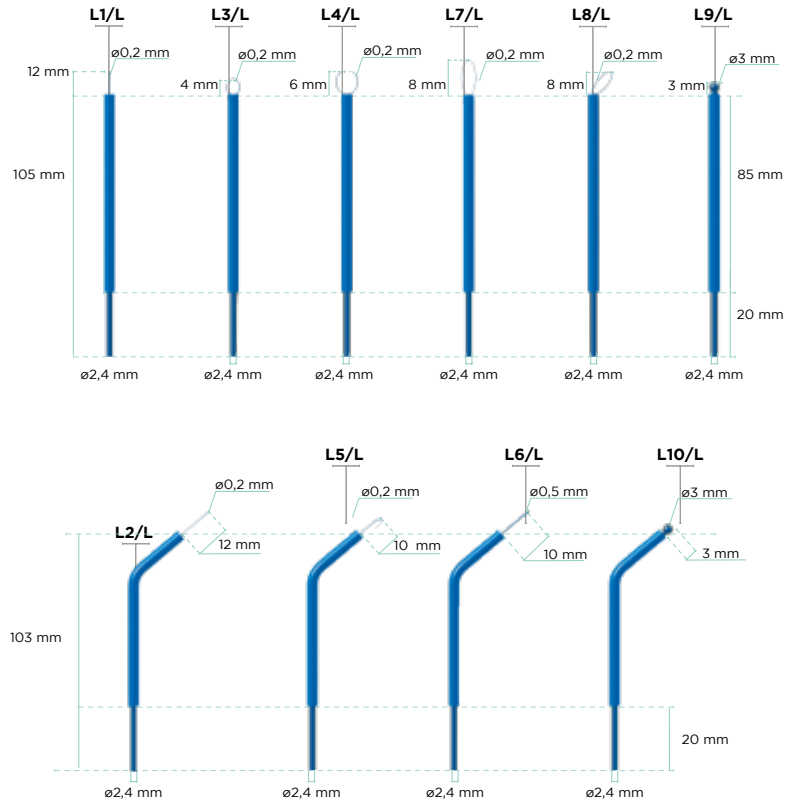
**Description** Kit of assorted electrode length 10 cm (10pcs)

**SINGLE ITEM**

- 500500.L/L1: Straight thin wire electrode length (5pcs)
- 500500.L/L3: Loop electrode  $\varnothing 4$  mm length (5pcs)
- 500500.L/L4: Loop electrode  $\varnothing 6$  mm (5pcs)
- 500500.L/L7: Drop electrode length (5pcs)
- 500500.L/L8: Noose electrode length (5pcs)
- 500500.L/L9: Straight ball electrode  $\varnothing 3$  mm (5pcs)
- 500500.L/L2: Bent thin wire electrode (5pcs)
- 500500.L/L5: Bent hook electrode (5pcs)
- 500500.L/L6: Bent thick wire electrode (5pcs)
- 500500.L/L10: Straight ball electrode  $\varnothing 3$  mm (5pcs)

**Compatibility** 00205.00, 00206.00, 755VL

00500.00/L



- + 50 D
- + 80 D
- + 80
- + 120
- + 160
- + 200
- + TOUCH 200
- + FLASH 120
- + FLASH 160
- + FLASH 200
- x 300 HP
- x 400 HP
- x TOUCH HP
- x TOUCH HP (Argon)
- x SURTRON EVAC
- x SURTRON ABC

pcs:  
 kit 00500.00\_L/L: assorted pcs 10  
 for each items from L-L1 to L-L10 pcs 5



**Description**

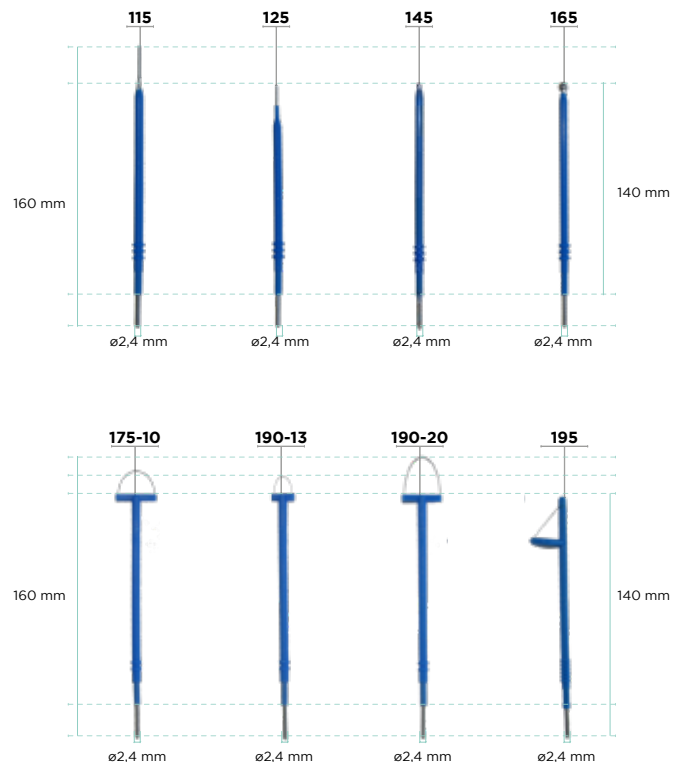
- 152-115 Blade Electrode 16 cm
- 152-125 Needle Electrode 13 cm
- 152-145 Ball Electrode  $\varnothing 3$ mm 13 cm
- 152-165 Ball Electrode  $\varnothing 5$ mm 14 cm
- 152-175-10 Loop Electrode 10x10 I.14 cm
- 152-190-13 Loop Electrode 20x13 I.14 cm
- 152-190-20 Loop Electrode 20x20 I.15 cm
- 152-195 Conization Electrode 13 cm

**Compatibility** 00205.00, 00206.00, 755VL

- + 50 D
- + 80 D
- + 80
- + 120
- + 160
- + 200
- + TOUCH 200
- + FLASH 120
- + FLASH 160
- + FLASH 200
- x 300 HP
- x 400 HP
- x TOUCH HP
- x TOUCH HP (Argon)
- x SURTRON EVAC
- x SURTRON ABC

pcs: 5

152 Long





# ADAP TERS

**Description** Bipolar adapter  
**Weight** 0,03 kg (0,06 lb)  
**Size** 4,5x1,5x7,5 cm (1,8x0,6x3 in)  
**Sterilization** NO  
**Sterilization cycles** NO  
**Compatibility** 00414.00, 00418.00

x 50 D TOUCH 200  
 x 80 D FLASH 120  
 x 80 FLASH 160  
 x 120 FLASH 200  
 x 160 300 HP  
 x 200 400 HP  
 x TOUCH HP  
 x TOUCH HP (Argon)  
 x SURTRON EVAC  
 x SURTRON ABC



pcs: 1

00498.00



**Description** 2001 bipolar adapter selector (until 2009)  
**Weight** 0,03 kg (0,06 lb)  
**Size** 3x3x8,5 cm (1,2x1,2x3 in)  
**Sterilization** NO  
**Sterilization cycles** NO  
**Compatibility** 00412.00

x 50 D TOUCH 200  
 x 80 D FLASH 120  
 # 80 FLASH 160  
 # 120 FLASH 200  
 # 160 300 HP  
 # 200 400 HP  
 # TOUCH HP  
 # TOUCH HP Argon  
 x SURTRON EVAC  
 x SURTRON ABC



pcs: 1

00498.04



**Description** Adapter for neutral electrode 6,3mm/Valley  
**Weight** 0,015kg (0,03lb)  
**Size** 2,2x2,2x7,2 cm (0,86x0,86x2,8 in)  
**Sterilization** NO  
**Sterilization cycles** NO  
**Compatibility** 00404.10, 00404.11

x 50 D TOUCH 200  
 x 80 D FLASH 120  
 # 80 FLASH 160  
 # 120 FLASH 200  
 # 160 300 HP  
 # 200 400 HP  
 # TOUCH HP  
 # TOUCH HP (Argon)  
 x SURTRON EVAC  
 x SURTRON ABC



pcs: 1

00498.06



**Description** Bipolar adapter EUR/2xM2,5  
**Weight** 0,015 kg (0,03 lb)  
**Size** 2,2x2,2x7,2 cm (0,86x0,86x2,8 in)  
**Sterilization** NO  
**Sterilization cycles** NO

x 50 D TOUCH 200  
 x 80 D FLASH 120  
 # 80 FLASH 160  
 # 120 FLASH 200  
 # 160 300 HP  
 # 200 400 HP  
 # TOUCH HP  
 # TOUCH HP (Argon)  
 x SURTRON EVAC  
 x SURTRON ABC



pcs: 1

00498.08



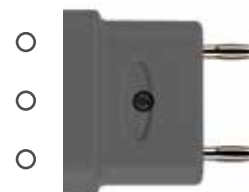
**Description** Bipolar adapter EUR/3xM4  
**Weight** 0,015 kg (0,03 lb)  
**Size** 2,2x2,2x7,2 cm (0,86x0,86x2,8 in)  
**Sterilization** NO  
**Sterilization cycles** NO

# 50 D TOUCH 200  
 # 80 D FLASH 120  
 # 80 FLASH 160  
 # 120 FLASH 200  
 # 160 300 HP  
 # 200 400 HP  
 # TOUCH HP  
 # TOUCH HP (Argon)  
 # SURTRON EVAC  
 # SURTRON ABC



pcs: 1

00498.10





**BI  
PO  
LAR**

**MO  
NO  
PO  
LAR**

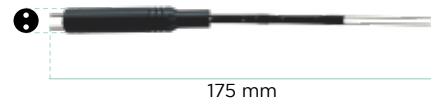
**Description** US Bi-Turbinate Electrode  
**Size** 18,5x2x2 cm (7,3x0,78x78 in)  
**Weight** 0,07 kg (0,154 in)  
**Tip Thickness** 4,5 mm (1,77 in)  
**Sterilization** Autoclavable  
**Sterilization cycles** 30  
**Compatibility** 00414.00

- x 50 D
- x 80 D
- x 80
- x 120
- + 160
- x 200
- x TOUCH 200
- x FLASH 120
- x FLASH 160
- x FLASH 200
- x 300 HP
- x 400 HP
- # TOUCH HP
- # TOUCH HP (Argon)
- # SURTRON EVAC
- # SURTRON ABC



pcs: 1

# 110-700



175 mm



**Description** Bipolar Forceps Artery Sealer  
**Size** 27 cm (10,62 in)  
**Weight** 0,1 kg (0,22 lb)  
**Sterilization** Autoclavable  
**Sterilization cycles** 30  
**Tip thickness** 3 mm  
**Compatibility** 00413.00

- x 50 D
- x 80 D
- x 80
- x 120
- + 160
- x 200
- x TOUCH 200
- x FLASH 120
- x FLASH 160
- x FLASH 200
- x 300 HP
- x 400 HP
- # TOUCH HP
- # TOUCH HP (Argon)
- # SURTRON EVAC
- # SURTRON ABC



pcs: 1

# 110-750NS



27 cm



**Description** Bipolar Forceps Artery Sealer  
**Size** 25,5 cm (10 in)  
**Size** 27 cm (10,62 in)  
**Sterilization** Autoclavable  
**Sterilization cycles** 30  
**Tip thickness** 3mm  
**Compatibility** 00413.00

- x 50 D
- x 80 D
- x 80
- x 120
- + 160
- x 200
- x TOUCH 200
- x FLASH 120
- x FLASH 160
- x FLASH 200
- x 300 HP
- x 400 HP
- # TOUCH HP
- # TOUCH HP (Argon)
- # SURTRON EVAC
- # SURTRON ABC



pcs: 1

# 110-755NS



25,5 cm



**Description** Bipolar Forceps Artery Sealer  
**Size** 17 cm (6,7in)  
**Size** 27 cm (10,62 in)  
**Sterilization** Autoclavable  
**Sterilization cycles** 30  
**Tip thickness** 2 mm  
**Compatibility** 00413.00

- x 50 D
- x 80 D
- x 80
- x 120
- + 160
- x 200
- + TOUCH 200
- x FLASH 120
- x FLASH 160
- x FLASH 200
- x 300 HP
- x 400 HP
- # TOUCH HP
- # TOUCH HP (Argon)
- # SURTRON EVAC
- # SURTRON ABC



pcs: 1

# 110-760NS



17 cm



# 310-110-05



11,5 cm



Tip Shape



**Description** Bipolar Forceps 11,5cm  
**Weight** 0,03 kg (0,6lb)  
**Length** 11,5 cm (4,52 in)  
**Tip thickness** 0,5 mm (0,019in)  
**Sterilization** Autoclavable  
**Sterilization cycles** 30  
**Compatibility** 00411.00, 00412.00

x 50 D  
 x 80 D  
 + 80  
 + 120  
 + 160  
 + 200  
 + TOUCH 200  
 + FLASH 120  
 + FLASH 160  
 + FLASH 200  
 + 300 HP  
 + 400 HP  
 # TOUCH HP  
 # TOUCH HP (Argon)  
 # SURTRON EVAC  
 # SURTRON ABC



pcs: 1

# 310-112-05



11,5 mm



Tip Shape



**Description** Curved Bipolar Forceps  
**Weight** 0,03 kg (0,6lb)  
**Length** 11,5 cm (4,52 in)  
**Tip thickness** 0,5 mm (0,019in)  
**Sterilization** Autoclavable  
**Sterilization cycles** 30  
**Compatibility** 00411.00, 00412.00

x 50 D  
 x 80 D  
 + 80  
 + 120  
 + 160  
 + 200  
 + TOUCH 200  
 + FLASH 120  
 + FLASH 160  
 + FLASH 200  
 + 300 HP  
 + 400 HP  
 # TOUCH HP  
 # TOUCH HP (Argon)  
 # SURTRON EVAC  
 # SURTRON ABC



pcs: 1

# 310-140-10



20 cm



Tip Shape



**Description** Bipolar Forceps  
**Weight** 0,03 kg (0,6lb)  
**Length** 20 cm (7,87lb)  
**Tip thickness** 1 mm (0,039in)  
**Sterilization** Autoclavable  
**Sterilization cycles** 30  
**Compatibility** 00411.00, 00412.00

x 50 D  
 x 80 D  
 + 80  
 + 120  
 + 160  
 + 200  
 + TOUCH 200  
 + FLASH 120  
 + FLASH 160  
 + FLASH 200  
 + 300 HP  
 + 400 HP  
 # TOUCH HP  
 # TOUCH HP (Argon)  
 # SURTRON EVAC  
 # SURTRON ABC



pcs: 1

# 310-140-20



20 cm



Tip Shape



**Description** Bipolar Forcep  
**Weight** 0,03 kg (0,6lb)  
**Length** 20 cm (7,87 lb)  
**Tip thickness** 2 mm (0,078 in)  
**Sterilization** Autoclavable  
**Sterilization cycles** 30  
**Compatibility** 00411.00, 00412.00

x 50 D  
 x 80 D  
 + 80  
 + 120  
 + 160  
 + 200  
 + TOUCH 200  
 + FLASH 120  
 + FLASH 160  
 + FLASH 200  
 + 300 HP  
 + 400 HP  
 # TOUCH HP  
 # TOUCH HP (Argon)  
 # SURTRON EVAC  
 # SURTRON ABC



pcs: 1

**Description** Curved Bipolar Forceps  
**Weight** 0,03Kg (0,6lb)  
**Length** 20 cm (7,87 in)  
**Tip thickness** 1 mm (0,039 in)  
**Sterilization** Autoclavable  
**Sterilization cycles** 30  
**Compatibility** 00411.00, 00412.00

x 50 D  
 x 80 D  
 x 80  
 x 120  
 x 160  
 x 200  
 + TOUCH 200  
 x FLASH 120  
 x FLASH 160  
 x FLASH 200  
 + 300 HP  
 + 400 HP  
 # TOUCH HP  
 # TOUCH HP (Argon)  
 # SURTRON EVAC  
 # SURTRON ABC



pcs: 1

310-142-10



20 cm



Tip Shape



**Description** Curved Bipolar Forceps  
**Weight** 0,03 Kg (0,6 lb)  
**Length** 20 cm (7,87 in)  
**Tip thickness** 2 mm (0,078 in)  
**Sterilization** Autoclavable  
**Sterilization cycles** 30  
**Compatibility** 00411.00, 00412.00

x 50 D  
 x 80 D  
 + 80  
 + 120  
 + 160  
 + 200  
 + TOUCH 200  
 + FLASH 120  
 + FLASH 160  
 + FLASH 200  
 + 300 HP  
 + 400 HP  
 # TOUCH HP  
 # TOUCH HP (Argon)  
 # SURTRON EVAC  
 # SURTRON ABC



pcs: 1

310-142-20



20 cm



Tip Shape



**Description** Bipolar Forceps Artery Sealer  
**Weight** 0,03 kg (0,6 lb)  
**Length** 25 cm (10 in)  
**Tip thickness** 3 mm (0,11 in)  
**Sterilization** Autoclavable  
**Sterilization cycles** 30  
**Compatibility** 00411.00, 00412.00

x 50 D  
 x 80 D  
 + 80  
 + 120  
 + 160  
 + 200  
 + TOUCH 200  
 + FLASH 120  
 + FLASH 160  
 + FLASH 200  
 + 300 HP  
 + 400 HP  
 # TOUCH HP  
 # TOUCH HP (Argon)  
 # SURTRON EVAC  
 # SURTRON ABC



pcs: 1

310-180-10



25 cm



Tip Shape



**Description** Angled Bipolar Forceps 20cm  
**Weight** 0,03 kg (0,6 lb)  
**Length** 17 cm (0,07 in)  
**Tip thickness** 2 mm (0,07 in)  
**Sterilization** Autoclavable  
**Sterilization cycles** 30  
**Compatibility** 00411.00, 00412.00

x 50 D  
 x 80 D  
 + 80  
 + 120  
 + 160  
 + 200  
 + TOUCH 200  
 + FLASH 120  
 + FLASH 160  
 + FLASH 200  
 + 300 HP  
 + 400 HP  
 # TOUCH HP  
 # TOUCH HP (Argon)  
 # SURTRON EVAC  
 # SURTRON ABC



pcs: 1

310-180-20



17 cm



Tip Shape



# 310-182-10



20 cm



**Description** Angled Curved Bipolar Forceps  
**Weight** 0,03 kg (0,6 lb)  
**Length** 20 cm (7,87 lb)  
**Tip thickness** 1 mm (0,039 in)  
**Sterilization** Autoclavable  
**Sterilisation cycles** 30  
**Compatibility** 00411.00, 00412.00

x 50 D  
 + 80 D  
 + 80  
 + 120  
 + 160  
 + 200  
 + TOUCH 200  
 + FLASH 120  
 + FLASH 160  
 + FLASH 200  
 + 300 HP  
 + 400 HP  
 # TOUCH HP  
 # TOUCH HP (Argon)  
 # SURTRON EVAC  
 # SURTRON ABC



pcs: 1

# 310-185-10



20 cm



**Description** Angled Curved Bipolar Forceps  
**Weight** 0,03 kg (0,6lb)  
**Length** 20 cm (7,87 lb)  
**Tip thickness** 1 mm (0,039in)  
**Sterilization** Autoclavable  
**Sterilisation cycles** 30  
**Compatibility** 00411.00, 00412.00

x 50 D  
 X 80 D  
 + 80  
 + 120  
 + 160  
 + 200  
 + TOUCH 200  
 + FLASH 120  
 + FLASH 160  
 + FLASH 200  
 + 300 HP  
 + 400 HP  
 # TOUCH HP  
 # TOUCH HP (Argon)  
 # SURTRON EVAC  
 # SURTRON ABC



pcs: 1

# 310-510



20 cm



**Description** Bipolar Electrode  
**Weight** 0,03 kg (0,6 lb)  
**Length** 20 cm (7,87 lb)  
**Tip thickness** 1 mm (0,039 in)  
**Sterilization** Autoclavable  
**Sterilisation cycles** 30  
**Compatibility** 00411.00, 00412.00

x 50 D  
 X 80 D  
 + 80  
 + 120  
 + 160  
 + 200  
 + TOUCH 200  
 + FLASH 120  
 + FLASH 160  
 + FLASH 200  
 + 300 HP  
 + 400 HP  
 # TOUCH HP  
 # TOUCH HP (Argon)  
 # SURTRON EVAC  
 # SURTRON ABC



pcs: 1

# 310-550



20 cm



**Description** Bipolar Electrode  
**Weight** 0,03 kg (0,06lb)  
**Length** 20 cm (7,87lb)  
**Tip thickness** 0,5 mm (0,02in)  
**Sterilization** Autoclavable  
**Sterilisation cycles** 30  
**Compatibility** 00411.00, 00412.00

x 50 D  
 X 80 D  
 + 80  
 + 120  
 + 160  
 + 200  
 + TOUCH 200  
 + FLASH 120  
 + FLASH 160  
 + FLASH 200  
 + 300 HP  
 + 400 HP  
 # TOUCH HP  
 # TOUCH HP (Argon)  
 # SURTRON EVAC  
 # SURTRON ABC



pcs: 1

**Description** Bipolar Forcep 20 cm - curved 2  
**Weight** 0,03 Kg (0,6 lb)  
**Length** 18 cm (7 lb)  
**Tip thickness** 0,5 mm (0,02 in)  
**Sterilization** Autoclavable  
**Sterilisation cycles** 30  
**Compatibility** 00411.00, 00412.00

- x 50 D
- x 80 D
- + 80
- + 120
- + 160
- + 200
- + TOUCH 200
- + FLASH 120
- + FLASH 160
- + FLASH 200
- + 300 HP
- + 400 HP
- # TOUCH HP
- # TOUCH HP (Argon)
- # SURTRON EVAC
- # SURTRON ABC



pcs: 1

310-590



18 cm

Tip Shape



**Description** Bipolar Forcep Clamp Scissors  
**Weight** 0,05 kg (0,1 lb)  
**Length** 15 cm (5,9 lb)  
**Tip thickness** 0,5 mm (0,02 in)  
**Sterilization** Autoclavable  
**Sterilisation cycles** 30  
**Compatibility** 00418.00

- x 50 D
- x 80 D
- + 80
- + 120
- + 160
- + 200
- + TOUCH 200
- + FLASH 120
- + FLASH 160
- + FLASH 200
- + 300 HP
- + 400 HP
- # TOUCH HP
- # TOUCH HP (Argon)
- # SURTRON EVAC
- # SURTRON ABC



pcs: 1

410-100-15



15 cm

Tip Shape



**Description** Bipolar Forcep Clamp Scissors  
**Weight** 0,05 kg (0,1 lb)  
**Length** 19 cm (7,5 lb)  
**Tip thickness** 0,5 mm (0,02 in)  
**Sterilization** Autoclavable  
**Sterilisation cycles** 30  
**Compatibility** 00418.00

- x 50 D
- x 80 D
- + 80
- + 120
- + 160
- + 200
- + TOUCH 200
- + FLASH 120
- + FLASH 160
- + FLASH 200
- + 300 HP
- + 400 HP
- # TOUCH HP
- # TOUCH HP (Argon)
- # SURTRON EVAC
- # SURTRON ABC



pcs: 1

410-100-19



19 cm

Tip Shape



**Description** Bipolar Forcep Scissors  
**Weight** 0,05 kg (0,11 lb)  
**Length** 18 cm (7,0 lb)  
**Tip thickness** 2 mm (0,078 in)  
**Sterilization** Autoclavable  
**Sterilisation cycles** 30  
**Compatibility** 00418.00

- x 50 D
- x 80 D
- + 80
- + 120
- + 160
- + 200
- + TOUCH 200
- + FLASH 120
- + FLASH 160
- + FLASH 200
- + 300 HP
- + 400 HP
- # TOUCH HP
- # TOUCH HP (Argon)
- # SURTRON EVAC
- # SURTRON ABC



pcs: 1

410-200-18

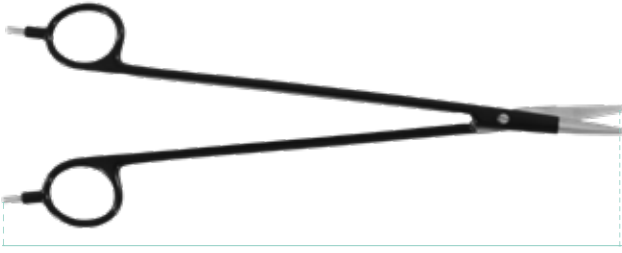


18 cm

Tip Shape



## 410-200-21



21 cm



Tip Shape



<b>Description</b>	Bipolar Forcep Scissors
<b>Weight</b>	0,05 kg (0,11 lb)
<b>Length</b>	21 cm (7,0 lb)
<b>Tip thickness</b>	2 mm (0,078 in)
<b>Sterilization</b>	Autoclavable
<b>Sterilisation cycles</b>	30
<b>Compatibility</b>	00418.00

x 50 D  
x 80 D  
x 80  
+ 120  
+ 160  
+ 200  
+ TOUCH 200  
+ FLASH 120  
+ FLASH 160  
+ FLASH 200  
+ 300 HP  
+ 400 HP  
# TOUCH HP  
# TOUCH HP (Argon)  
# SURTRON EVAC  
# SURTRON ABC



pcs: 1

## 410-200-23



23 cm



Tip Shape



<b>Description</b>	Bipolar Forcep Scissors
<b>Weight</b>	0,05 kg (0,11 lb)
<b>Length</b>	23 cm (7,0 lb)
<b>Tip thickness</b>	2 mm (0,078 in)
<b>Sterilization</b>	Autoclavable
<b>Sterilisation cycles</b>	30
<b>Compatibility</b>	00418.00

x 50 D  
x 80 D  
x 80  
+ 120  
+ 160  
+ 200  
+ TOUCH 200  
+ FLASH 120  
+ FLASH 160  
+ FLASH 200  
+ 300 HP  
+ 400 HP  
# TOUCH HP  
# TOUCH HP (Argon)  
# SURTRON EVAC  
# SURTRON ABC



pcs: 1

## 330-160



18 cm

Tip Shape



<b>Description</b>	Monopolar Forceps 21cm
<b>Weight</b>	0,05Kg (0,11lb)
<b>Length</b>	18 cm (7,0 lb)
<b>Cutter length</b>	45 mm (1,7 in)
<b>Sterilization</b>	Autoclavable
<b>Sterilisation cycles</b>	30
<b>Compatibility</b>	0040202

x 50 D  
x 80 D  
x 80  
+ 120  
+ 160  
+ 200  
+ TOUCH 200  
+ FLASH 120  
+ FLASH 160  
+ FLASH 200  
+ 300 HP  
+ 400 HP  
# TOUCH HP  
# TOUCH HP (Argon)  
# SURTRON EVAC  
# SURTRON ABC



pcs: 1

## 330-134-20



21 cm

Tip Shape



<b>Description</b>	Monopolar Surgical Scissors
<b>Weight</b>	0,05 kg (0,11 lb)
<b>Length</b>	21 cm (8,2 lb)
<b>Tip thickness</b>	2 mm (0,078 in)
<b>Sterilization</b>	Autoclavable
<b>Sterilisation cycles</b>	30
<b>Compatibility</b>	0040202

x 50 D  
x 80 D  
x 80  
+ 120  
+ 160  
+ 200  
+ TOUCH 200  
+ FLASH 120  
+ FLASH 160  
+ FLASH 200  
+ 300 HP  
+ 400 HP  
# TOUCH HP  
# TOUCH HP (Argon)  
# SURTRON EVAC  
# SURTRON ABC



pcs: 1



# EVACUATION KIT

# 00900.01/12



STERILE EO 

**Description** Handle evacuation kit for surgical smoke evacuato  
**Pipe Diameter** ø22 cm (3,93 in)  
**Pipe Length** 18,5 cm (7,2 in)  
**Weight** 0,05 kg (0,11 lb)  
**Sterilization** NO  
**Sterilisation cycles** NO

x 50 D  
 x 80 D  
 x 80  
 x 120  
 x 160  
 x 200  
 x TOUCH 200  
 x FLASH 120  
 x FLASH 160  
 x FLASH 200  
 x 300 HP  
 x 400 HP  
 x TOUCH HP  
 x TOUCH HP (Argon)  
 + SURTRON EVAC  
 x SURTRON ABC

 pcs: 12

# 00900.02/06





**Description** Evacuation kit for surgical smoke evacuator  
**Pipe Diameter** ø22 cm (0,86 in)  
**Pipe Length** 240 cm (94,48 in)  
**Weight** 0,05 kg (0,11 lb)  
**Sterilization** NO  
**Sterilisation cycles** NO  
**Compatibility** 00900.01/12, 00900.05, 00900.07, 00900.08/12,

x 50 D  
 x 80 D  
 x 80  
 x 120  
 x 160  
 x 200  
 x TOUCH 200  
 x FLASH 120  
 x FLASH 160  
 x FLASH 200  
 x 300 HP  
 x 400 HP  
 x TOUCH HP  
 x TOUCH HP (Argon)  
 + SURTRON EVAC  
 x SURTRON ABC

 pcs: 6

# 00900.04





**Description** Autoclavable evacuation tube D.22  
**Pipe Diameter** ø7 mm (0,27 in)  
**Pipe Length** 2,40 m (94,5 in)  
**Weight** 0,05 kg (0,11 lb)  
**Sterilization** Autoclavable  
**Sterilisation cycles** 100  
**Compatibility** 00900.01/12, 00900.05, 00900.06/06, 00900.07, 00900.08/12

x 50 D  
 x 80 D  
 x 80  
 x 120  
 x 160  
 x 200  
 x TOUCH 200  
 x FLASH 120  
 x FLASH 160  
 x FLASH 200  
 x 300 HP  
 x 400 HP  
 x TOUCH HP  
 x TOUCH HP (Argon)  
 + SURTRON EVAC  
 x SURTRON ABC

 pcs: 1

**Description** Autoclavable evacuation tube D.22  
**Pipe Diameter** ø7 mm (0,27 in)  
**Pipe Length** 2,40 m (94,5 in)  
**Weight** 0,05 kg (0,11lb)  
**Sterilization** Autoclavable  
**Sterilisation cycles** 100  
**Compatibility** 00900.02, 00900.04

00900.05

x 50 D  
x 80 D  
x 80  
x 120  
x 160  
x 200  
x TOUCH 200  
x FLASH 120  
x FLASH 160  
x FLASH 200  
x 300 HP  
x 400 HP  
x TOUCH HP  
x TOUCH HP Argon  
1 SURTRON EVAC  
x SURTRON ABC



pcs: 1



ADAPTER  
7/22



**Description** Bacterial/Viral Filter D.22  
**Pipe Diameter** ø22 mm (0,867 in)  
**Connection Diameter** ø15 mm (0,59 in)  
**Sterilization** NO  
**Sterilisation cycles** NO  
**Compatibility** 00900.04, 00900.02/06,  
00900.FU01/10

00900.06/06

x 50 D  
x 80 D  
x 80  
x 120  
x 160  
x 200  
x TOUCH 200  
x FLASH 120  
x FLASH 160  
x FLASH 200  
x 300 HP  
x 400 HP  
x TOUCH HP  
x TOUCH HP (Argon)  
+ SURTRON EVAC  
x SURTRON ABC



pcs: 1



**Description** Autoclavable handle evacuation kit  
**Pipe Diameter** ø22 cm (0,86 in)  
**Pipe Length** 150 cm (59 in)  
**Weight** 0,05 kg (0,11 lb)  
**Sterilization** Autoclavable  
**Sterilisation cycles** 30  
**Compatibility** 755VL, 00205.00/40, 00206.00/40  
00900.02/06, 00900.04

00900.07

x 50 D  
x 80 D  
x 80  
x 120  
x 160  
x 200  
x TOUCH 200  
x FLASH 120  
x FLASH 160  
x FLASH 200  
x 300 HP  
x 400 HP  
x TOUCH HP  
x TOUCH HP (Argon)  
+ SURTRON EVAC  
x SURTRON ABC



pcs: 1



# 00900.08/12



STERILE EO



<b>Description</b>	Evacuation kit for TROCAR Luer Lock
<b>Pipe Diameter</b>	ø22 mm (0,86 in)
<b>Pipe Length</b>	240 cm (94,48 in)
<b>Weight</b>	0,05 kg (0,11 lb)
<b>Sterilization</b>	NO
<b>Sterilisation cycles</b>	NO
<b>Compatibility</b>	00900.02, 00900.04

- x 50 D
- x 80 D
- x 80
- x 120
- x 160
- x 200
- x TOUCH 200
- x FLASH 120
- x FLASH 160
- x FLASH 200
- x 300 HP
- x 400 HP
- x TOUCH HP
- x TOUCH HP (Argon)
- x SURTRON EVAC
- x SURTRON ABC



pcs: 12

# 00900.FU01/10\*



<b>Description</b>	ULPA Filter for SURTRON EVAC - red
<b>Filter Diameter</b>	22 mm 7/8" (0,867 in)
<b>Particles diameter</b>	0,12 micron
<b>Filter Type</b>	ULPA with active carbon
<b>Filter efficiency</b>	99,999X %
<b>Filter duration</b>	00900.FST/10: 5 hours
<b>Filter duration</b>	00900.FU01/10: 20 hours

- x 50 D
- x 80 D
- x 80
- x 120
- x 160
- x 200
- x TOUCH 200
- x FLASH 120
- x FLASH 160
- x FLASH 200
- x 300 HP
- x 400 HP
- x TOUCH HP
- x TOUCH HP (Argon)
- x SURTRON EVAC
- x SURTRON ABC

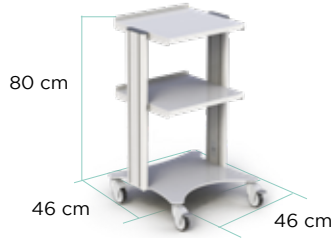


pcs: 3



**TROLLEY**

# TRO03



**Description** Trolley 3 shelves  
**Size WxHxD** 80x46x46 cm (31x18,1x18,1 in)  
**Weight** 18 kg (34,47 lb)  
**Shelf size** 43x36 cm (16,9x14,17 in)  
**Color** RAL7035 (Light Grey)  
**Frame Material** Trolley made of aluminum with adjustable shelves made with steel, covered with a coat of paint.  
**Wheel type** 80 mm pirouette, anterior wheels whit block system.

- + 50 D
- + 80 D
- + 80
- + 120
- + 160
- + 200
- + TOUCH 200
- + FLASH 120
- + FLASH 160
- + FLASH 200
- + 300 HP
- + 400 HP
- + TOUCH HP
- + TOUCH HP (Argon)
- + SURTRON EVAC
- + SURTRON ABC

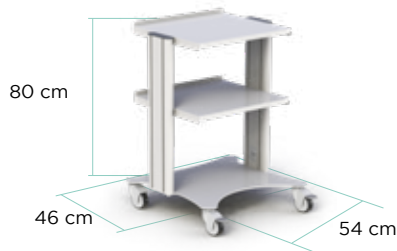


pcs: 1

WxHxD: 13x47x67 cm

Weight: 18 kg

# TRO03W



**Description** Trolley 3 shelves  
**Size WxHxD** 80x54x46 cm (31x21,2x18,1 in)  
**Weight** 18,5 kg (34,47 lb)  
**Shelf size** 40x40 cm (15,7x15,74 in)  
**Color** RAL7035 (Light Grey)  
**Frame Material** Trolley made of aluminum with adjustable shelves made with steel, covered with a coat of paint.  
**Wheel type** 80 mm pirouette, anterior wheels, whit block system.

- + 50 D
- + 80 D
- + 80
- + 120
- + 160
- + 200
- + TOUCH 200
- + FLASH 120
- + FLASH 160
- + FLASH 200
- + 300 HP
- + 400 HP
- + TOUCH HP
- + TOUCH HP (Argon)
- + SURTRON EVAC
- + SURTRON ABC



pcs: 1

WxHxD: 13x47x67 cm

Weight: 18,5 kg

# TRO04



**Description** Trolley 4 shelves  
**Size WxHxD** 90x46x46 cm (35,43x18,1x18,1 in)  
**Weight** 20 kg (39,6 lb)  
**Shelf size** 40x36 cm (15,7x14,17 in)  
**Color** RAL7035 (Light Grey)  
**Frame Material** Trolley made of aluminum with adjustable shelves made with steel, covered with a coat of paint.  
**Wheel type** 80 mm pirouette, anterior wheels whit block system.

- + 50 D
- + 80 D
- + 80
- + 120
- + 160
- + 200
- + TOUCH 200
- + FLASH 120
- + FLASH 160
- + FLASH 200
- + 300 HP
- + 400 HP
- + TOUCH HP
- + TOUCH HP (Argon)
- + SURTRON EVAC
- + SURTRON ABC



pcs: 1

WxHxD: 13x47x75 cm

Weight: 20 kg

# TR005

**Description** Trolley 5 shelves  
**Size WxHxD** 112x46x46 cm (44x18,1x18,1 in)  
**Weight** 19 kg (41,9 lb)  
**Shelf size** 43x36 cm (16,9x14,17 in)  
**Color** RAL7035 (Light Grey)  
**Frame Material** Trolley made of aluminum with adjustable shelves made with steel, covered with a coat of paint.  
**Wheel type** 80 mm pirouette, anterior wheels whit block system.

- + 50 D
- + 80 D
- + 80
- + 120
- + 160
- + 200
- + TOUCH 200
- + FLASH 120
- + FLASH 160
- + FLASH 200
- x 300 HP
- x 400 HP
- x TOUCH HP
- x TOUCH HP (Argon)
- + SURTRON EVAC
- x SURTRON ABC

pcs: 1  
 shelves WxHxD: 13x47x67 cm  
 side columns WxHxD: 104x15x20 cm  
 Weight: 27,5 kg



**Description** Trolley 5 shelves  
**Size WxHxD** 112x46x54 cm (44x18,1x21,2 in)  
**Weight** 24,5 kg (54 lb)  
**shelf size** 43x36 cm (16,9x14,17 in)  
**Color** RAL7035 (Light Grey)  
**Frame Material** Trolley made of aluminum with adjustable shelves made with steel, covered with a coat of paint.  
**Wheel type** 80 mm pirouette, anterior wheels whit block system.

- + 50 D
- + 80 D
- + 80
- + 120
- + 160
- + 200
- + TOUCH 200
- + FLASH 120
- + FLASH 160
- + FLASH 200
- + 300 HP
- + 400 HP
- + TOUCH HP
- + TOUCH HP (Argon)
- + SURTRON EVAC
- + SURTRON ABC

pcs: 1  
 shelves WxHxD: 13x47x67 cm  
 side columns WxHxD: 104x15x20 cm  
 Weight: 27,5 kg



# TR005W



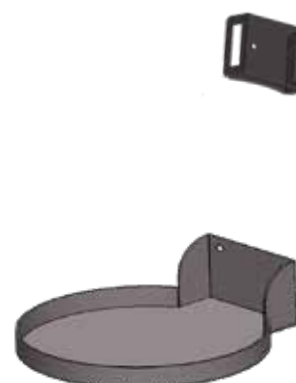
**Description** Support for Cylinder  
**Size WxHxD** 18x6x20 cm (7x2,3x7,87 in)  
**Weight** 0,5 kg (1,1 lb)  
**Color** RAL7016 (Anthracite Gray)  
**Frame Material** Shelves made with steel, covered with a coat of paint.

- + 50 D
- + 80 D
- + 80
- + 120
- + 160
- + 200
- + TOUCH 200
- + FLASH 120
- + FLASH 160
- + FLASH 200
- + 300 HP
- + 400 HP
- x TOUCH HP
- + TOUCH HP (Argon)
- x SURTRON EVAC
- + SURTRON ABC

pcs: 1  
 WxHxD: 67x47x23 cm



# TRCYLSUP01



# TRDRAWER01



**Description**  
**Size WxHxD**

Drawer for trolley type TR W  
38,5x10x28,7 cm (15x3,9x11,3 in)

+ 50 D  
+ 80 D  
+ 80  
+ 120  
+ 160  
+ 200  
+ TOUCH 200  
+ FLASH 120  
+ FLASH 160  
+ FLASH 200  
+ 300 HP  
+ 400 HP  
x TOUCH HP  
x TOUCH HP Argon  
x SURTRON EVAC  
x SURTRON ABC



pcs: 1

# TRDRAWER01W



**Description**  
**Size WxHxD**

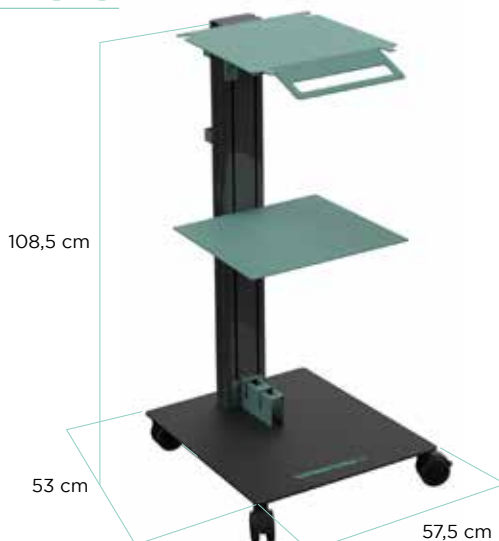
Drawer for trolley type TR W  
38,5x10x28,7 cm (15x3,9x11,3 in)

x 50 D  
x 80 D  
x 80  
x 120  
x 160  
x 200  
x TOUCH 200  
x FLASH 120  
x FLASH 160  
x FLASH 200  
x 300 HP  
x 400 HP  
x TOUCH HP  
x TOUCH HP Argon  
+ SURTRON EVAC  
x SURTRON ABC



pcs: 1

# TRST001



**Description**  
**Size WxHxD**

SURTRON TOUCH HP Trolley  
53x108,5x57,5 cm (20x42,7x22,6 in)

**Weight**  
**shelf size**

33 Kg (72,75lb)  
43,5x10x38 mm (17,x3,9x15 in)

**Color**

RAL7016 (Anthracite gray)  
RAL6027 (Light Green)  
RAL9005 (Intense Black)

**Frame Material**

Trolley with column made of aluminum with adjustable shelves made with steel, covered with a coat of paint.

**Wheel type**

80 mm pirouette, anterior wheels whit block system.

x 50 D  
x 80 D  
x 80  
x 120  
x 160  
x 200  
x TOUCH 200  
x FLASH 120  
x FLASH 160  
x FLASH 200  
x 300 HP  
+ 400 HP  
+ TOUCH HP  
+ TOUCH HP Argon  
x SURTRON EVAC  
x SURTRON ABC



pcs: 1

WxHxD: 100x60x18 cm Weight: 33 kg

**Description****Size WxHxD****Weight****shelf size****Color****Frame Material**

Basket for ST Trolley  
 53x108,5x57,5 cm (20x42,7x22,6 in)  
 3,2 kg (7 lb)  
 43,5x10x38 mm (17,x3,9x15 in)  
 RAL9005 (Intense Black)  
 Basket made with steel,  
 covered with a coat of paint.

x 50 D  
 x 80 D  
 x 80  
 x 120  
 x 160  
 x 200  
 x TOUCH 200  
 x FLASH 120  
 x FLASH 160  
 x FLASH 200  
 + 300 HP  
 + 400 HP  
 + TOUCH HP  
 + TOUCH HP Argon  
 x SURTRON EVAC  
 x SURTRON ABC



pcs: 1

TRSTB01**Description****Size WxHxD****Weight****Color****Frame Material**

Support section for ST Trolley  
 43,5x13,5x38 cm (17x5,3x15 in)  
 5,75Kg (2,26lb)  
 RAL6027 (Light Green)  
 Holder made with steel, covered  
 with a coat of paint.

x 50 D  
 x 80 D  
 x 80  
 x 120  
 x 160  
 x 200  
 x TOUCH 200  
 x FLASH 120  
 x FLASH 160  
 x FLASH 200  
 + 300 HP  
 + 400 HP  
 + TOUCH HP  
 + TOUCH HP Argon  
 x SURTRON EVAC  
 x SURTRON ABC



pcs: 1

TRSTP01**Description****Size WxHxD****Weight****Color****Frame Material**

Basket for ST Trolley  
 14,5x30x19,3 cm (5,7x11,8x7,6 in)  
 2,4 Kg (5,29 lb)  
 RAL6027 (Light Green)  
 Basket holder applicable to the  
 Surtron Touch HP Trolley made with  
 steel, covered with a coat of paint.

x 50 D  
 x 80 D  
 x 80  
 x 120  
 x 160  
 x 200  
 x TOUCH 200  
 x FLASH 120  
 x FLASH 160  
 x FLASH 200  
 + 300 HP  
 + 400 HP  
 + TOUCH HP  
 + TOUCH HP Argon  
 x SURTRON EVAC  
 x SURTRON ABC



pcs: 1

TRSTCS1







**LED SpA**

Via Selciatella, 40  
04011 - Aprilia (LT) Italy

[www.led.it](http://www.led.it) - [info@led.it](mailto:info@led.it)

Tel. +39 06 92870045  
Fax. +39 06 92870046

